

# HINO 165 SERIES



# 2010

## TRUCK CHASSIS SPECIFICATIONS

**(NB6J) SS-NB014**

**GVW: 7,250 kg (16,000 lbs.)**

**ENGINE MODEL: J05D-TF (Turbo Intercooled)**

All 2010 models require ultra-low sulfur diesel fuel

### DIMENSIONS (On standard specifications)

MODEL		NB6JKSA		NB6JMSA	
Wheelbase	A mm(in.)	4,648	(183.0)	5,105	(201.0)
Overall length	B mm(in.)	7,432	(292.6)	7,889	(310.6)
Overall width	C mm(in.)	2,295	(90.4)	2,295	(90.4)
Overall height	D mm(in.)	2,575	(101.4)	2,575	(101.4)
Cab to axle	E mm(in.)	3,038	(119.6)	3,495	(137.6)
Rear overhang	F mm(in.)	1,905	(75.0)	1,905	(75.0)
Frame height at					
Front axle	G mm(in.)	765	(30.1)	765	(30.1)
Rear axle	H mm(in.)	865	(34.1)	865	(34.1)
Road clearance					
(at front axle)	J mm(in.)	180	(7.1)	180	(7.1)
Tread					
Front	K mm(in.)	1,850	(72.8)	1,850	(72.8)
Rear	L mm(in.)	1,805	(71.1)	1,805	(71.1)
Turning radius					
Tire	mm(in.)	7,530	(296.5)	8,200	(322.8)
Swept	mm(in.)	7,960	(313.4)	8,630	(339.8)

### CHASSIS WEIGHTS (On std. spec., without spare tire & std. tool set)

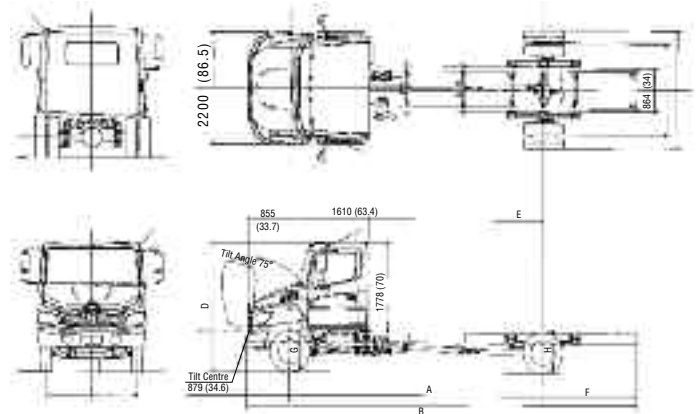
MT Total weight	kg(lb.)	-	-	3,290	(7,250)
Front axle	kg(lb.)	-	-	2,215	(4,880)
Rear axle	kg(lb.)	-	-	1,075	(2,370)
AT Aisin Total weight	kg(lb.)	3193	(7024)	3208	(7057)
Front axle	kg(lb.)	2146	(4721)	2166	(4765)
Rear axle	kg(lb.)	1047	(2303)	1042	(2292)
AT Allison Total weight	kg(lb.)	3,315	(7,310)	3,330	(7,340)
Front axle	kg(lb.)	2,230	(4,920)	2,250	(4,960)
Rear axle	kg(lb.)	1,085	(2,390)	1,080	(2,380)

### POWER LINE & PERFORMANCE [7,250 kg (16,000 lbs.) GVW & 225-70R19.5 tires]

Power line	□ STD.	□ OPT.	□ OPT.	
Max. speed km/h	124	118	114	
Gradeability (tan.θ) %	54.4	52.8	56.5	
Transmission Model	Eaton FS4205A	AISIN 450-43LE	ALLISON 1000RDS	
Type	Five-speed direct drive synchromesh 2nd-5th	Four-speed automatic	Six-speed automatic	
1st.	8.052	3.018	3.102	
2nd.	4.352	1.548	1.811	
3rd.	2.448	1.000	1.406	
Ratios	4th.	1.476	0.703	1.000
5th.	1.000	-	0.712	
6th.	-	-	0.610	
Rev.	8.052	2.678	4.492	
Rear axle gear ratios	3.580	5.380	5.130	

### ENGINE

Model	HINO J05D-TF
Type:	Diesel 4-cy., 4-cyl. in-line, water-cooled
Combustion system:	Direct injection type
Max. output: (SAE Gross)	175HP at 2,500 rpm
Max. torque: (SAE Gross)	510 N·m (376 lb.-ft.) at 1,600 rpm
Bore and stroke:	112 x 120 mm (4.41 x 4.72 in.)
Piston displacement	4.730 L (288.5 cu.in.)
Fuel injection system:	Common rail ND
Governor:	Electronically controlled
Intake system:	Turbocharged and intercooled
Air cleaner:	Paper filter type ("DONALDSON")
Pre-heater:	Glow plug type
Fan clutch:	Bimetal thermostat sensor regulates fan speed
Block heater:	1,000 watts/120V immersion type



THE QUALITY CHOICE.

**WEIGHT CAPACITIES**

Front axle	kg(lbs.)	2,841 (6,250)
Rear axle	kg(lbs.)	5,000 (11,000)
Front spring	kg(lbs.)	2,727 (6,000)
Rear spring	kg(lbs.)	5,454 (12,000)

**LIQUID CAPACITIES**

Fuel tank ltr.(gal./US)	132.5 (35), aluminum
Cooling system	20.0 (5.29)
ltr.(gal./US)	: Eaton FS4205A 19.5 (5.16) : AISIN 450-43LE 19.5 (5.16) : ALLISON 1000RDS

**AXLE / SUSPENSION**

Front axle	MFS-6 series reversed Elliot, "I" beam, oil lubricated wheel bearings
Front spring	Taper-leaf springs w/ shock absorbers
Rear axle	MS 12-113 series Full-floating, single reduction Single-speed by hypoid gears
Rear spring	Aisin A/T: Semi-elliptic main Allison A/T & Eaton M/T : Semi-elliptic main and auxiliary helper, w/ shock absorbers

**FRAME**

Ladder type	Straight J section
Width mm(in.)	863.6 (34)
Tensile strength kg/mm <sup>2</sup> (lb/in) <sup>2</sup>	63.4 (90,143)
Resisting bending moment (one side) kg•cm (in•lbs.)	754,691 (655,100) no reinforcement

**STEERING**

Type	Telescopic and tilt steering column with lock Recirculating ball, with hydraulic booster integral type
------	--

**CLUTCH**

Type	Dry single plate with damper springs EATON-SPICER AR350 series
Facing material	Cerametallic
Facing outside diameter mm (in.)	350 (13.8)
Control	Hydraulic

**WHEELS / TIRES**

Wheel size	19.5X6.00RW, 8 stud
w/Eaton M/T & Allison A/T:	6 steel wheels
w/Aisin A/T:	6 aluminum wheels
Tires	225/70/19.5
Brand & Pattern	BS Fr: RIB, Rr: LUG

**BRAKES**

Service brake	Hydraulic system with disc brake for front and rear wheels, with automatic adjustment
Disc diameter	Front;
x pad area (cm <sup>2</sup> )	324 x 110 x 15.5
x thickness mm(in.)	(12.756 x 17.05 x 0.61) Rear; 324 x 110 x 15.5 (12.756 x 17.05 x 0.61)
Control	Hydraulic dual circuit with Antilock Brake System(ABS)
Parking brake	Mechanical, internal (with cover) expanding acting on transmission output shaft
Drum diameter mm(in.)	254 (10): MERITOR 10 228.6 (9): BOSCH 9
Exhaust brake	Electric-pneumatic with valve in exhaust pipe

**CAB EQUIPMENT**

Cab construction	- All steel welded
Seating	- Three Driver's seat - Adjustable reclining, covered with fabric with air suspension Passenger's seat - Bench type, covered with fabric
Seat belts	- 3-point type (driver and passenger), one 2-point type (centre)
Heater/Defroster	- 18,357 BTU/h (4,627 Kcal/h)
Mirrors	outside rearview, chrome, 1 flat, heated and 1 convex on each side
Sun visors	- Two
Over-head console	- Two
Air conditioning	
Windshield	- Laminated
Windshield wipers	- Dual electric, 2-speed and intermittent
Cup holder	- L size (centre console)
Cup holder at centre cluster	(Single) for MT
Cup holder at centre cluster	(Dual) for AT
Electric power windows	
Electronic cruise control	
Cigarette lighter / 12V power outlet	
Power door lock	

**DASH INSTRUMENTATION**

Driver information display	
Meters and gauges, metric system	
Speedometer - km/h (mph)	
Odometer (km/h)	
Fuel gauge	
Coolant temperature gauge	
Engine tachometer	
Warning and pilot lamps and buzzers	
Oil pressure warning lamp and buzzer	
Brake pressure warning lamp and buzzer	
Coolant level warning lamp and buzzer	
Battery charging warning lamp	
High beam indicator lamp	
Turn signal pilot lamp	
Parking brake warning lamp	
Engine control system warning lamp	
ABS warning lamp	
Glow plug pre-heater indicator lamp	

**ELECTRICAL EQUIPMENT**

Batteries	Two, parallel connection, each 12 V
Capacity	1400 CCA
Alternator	12 V, 105 A brushless
Starter	12 V, 2.5 kW
Audio system	AM/FM radio with CD
Headlamps	2, composite type
Identification lamps (front) LED type	
Stop/Tail lamps	
Back-up lamps	
Turn signals and hazard warning lamps	
Dome lamp	
Front side marker lamps	
Clearance lamps (front) LED type	
Electrical horn (dual)	

**CHASSIS EQUIPMENT**

Fuel pre-filter - Pre-filter (dust) and sedimenter (water) with heater	
Reflectors - Two rear, two front side	
Hook - One at front	
Radiator Grille, Chrome	
Bumper, Chrome	

*See your authorized Hino Dealer for a complete list of options and accessories.*

**NOTE :** All specifications of the products are with normal manufacturing allowances and tolerances. HINO MOTORS CANADA, LTD. reserves the right to alter specifications at any time without previous notice.