

Chapter 10

MOUNTING DETAILS OF CHASSIS EQUIPMENT

1. FUEL TANK
2. AIR TANK
3. EXHAUST SYSTEM
4. DEF TANK

ABOUT CAD-DATA

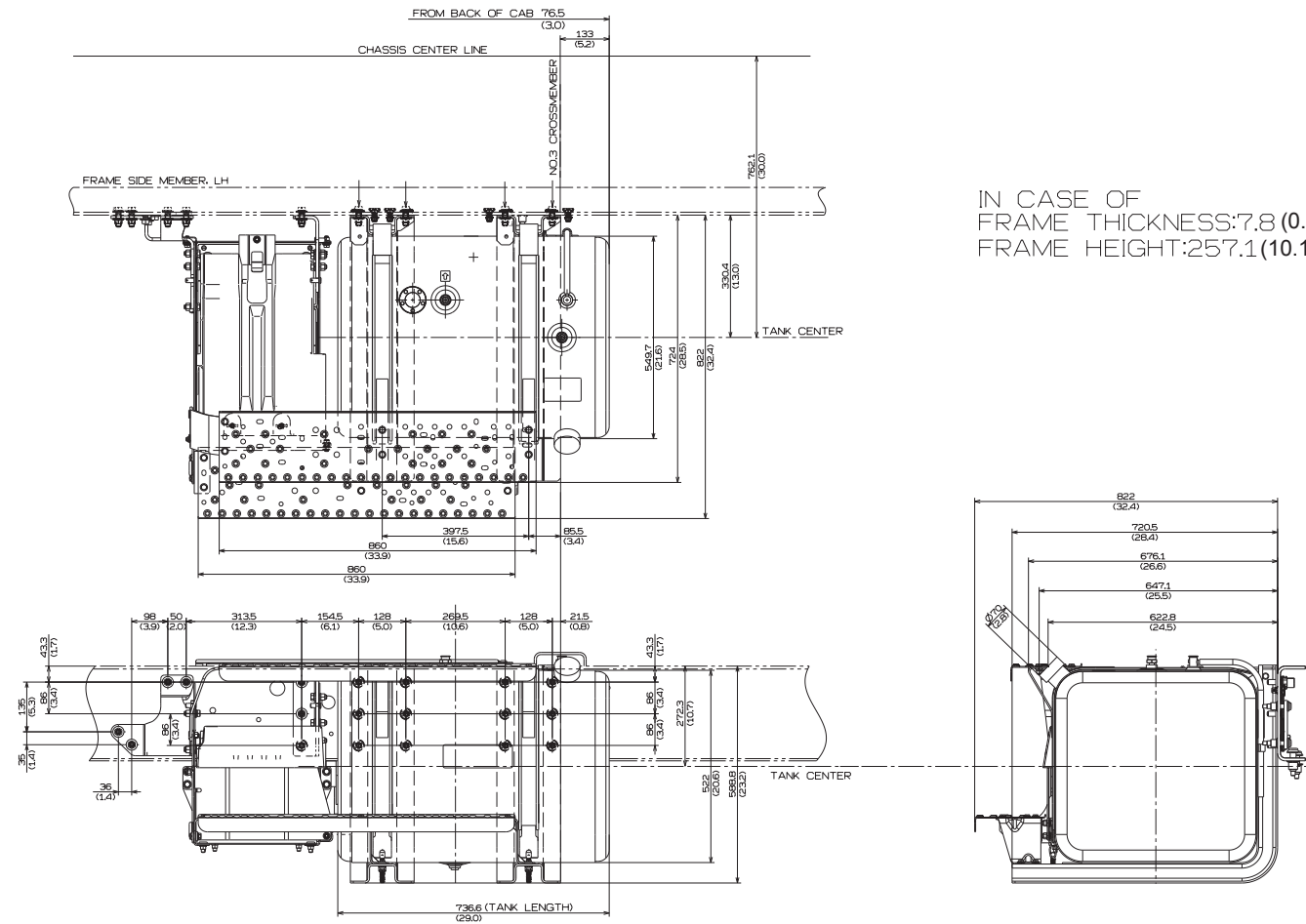
CAD-DATA is contained on separate attachment file in this CD-ROM.

CONTENTS ; · EXHAUST SYSTEM

1. FUEL TANK

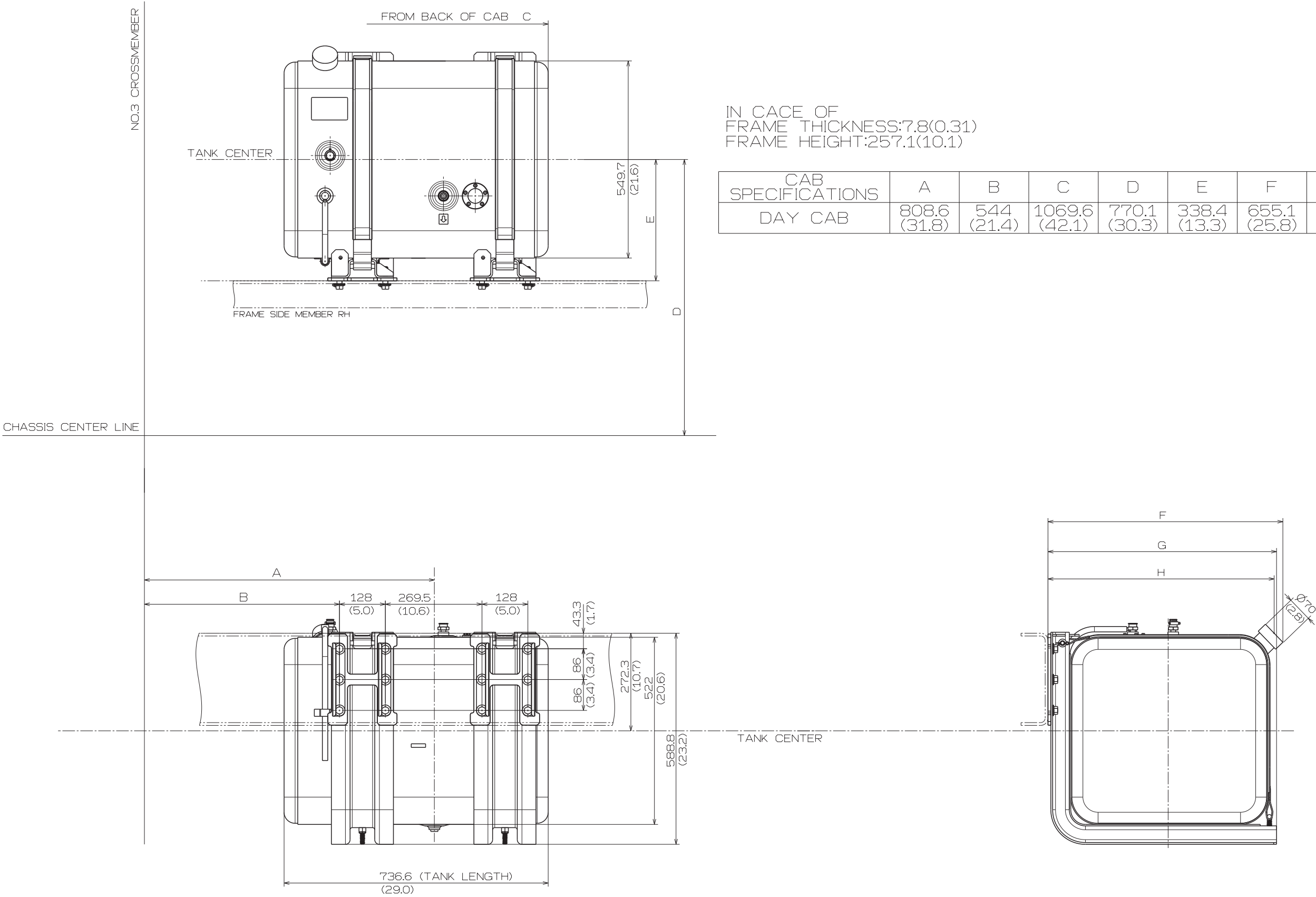
CAPACITY : 189L (50gal)

Unit : mm (in.)



CAPACITY : 189L (50gal) TANK ADDITION

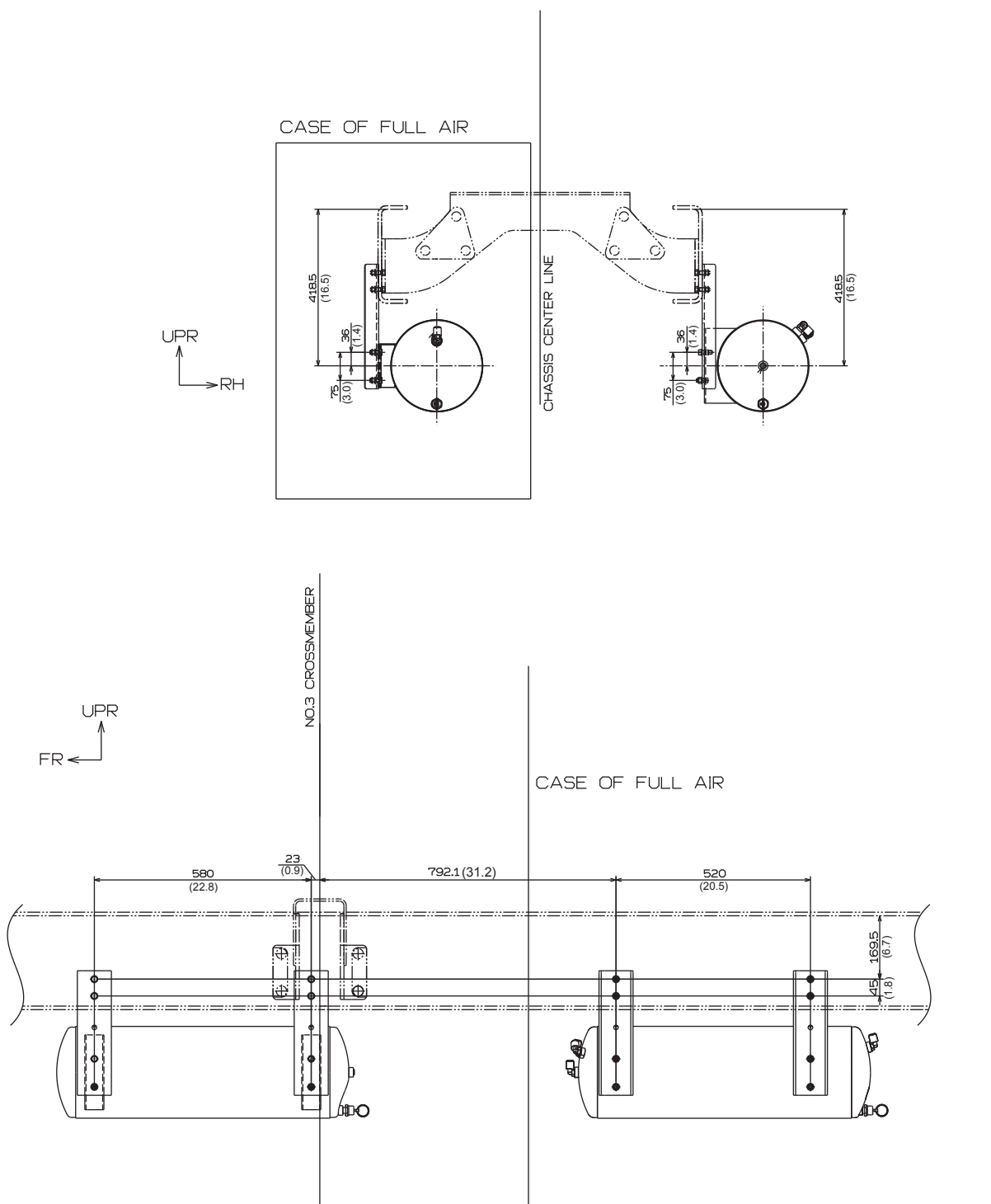
Unit : mm (in.)



2. AIR TANK

MODEL : NE, NF <HYDRO>
NJ, NV, NH <FULL AIR>

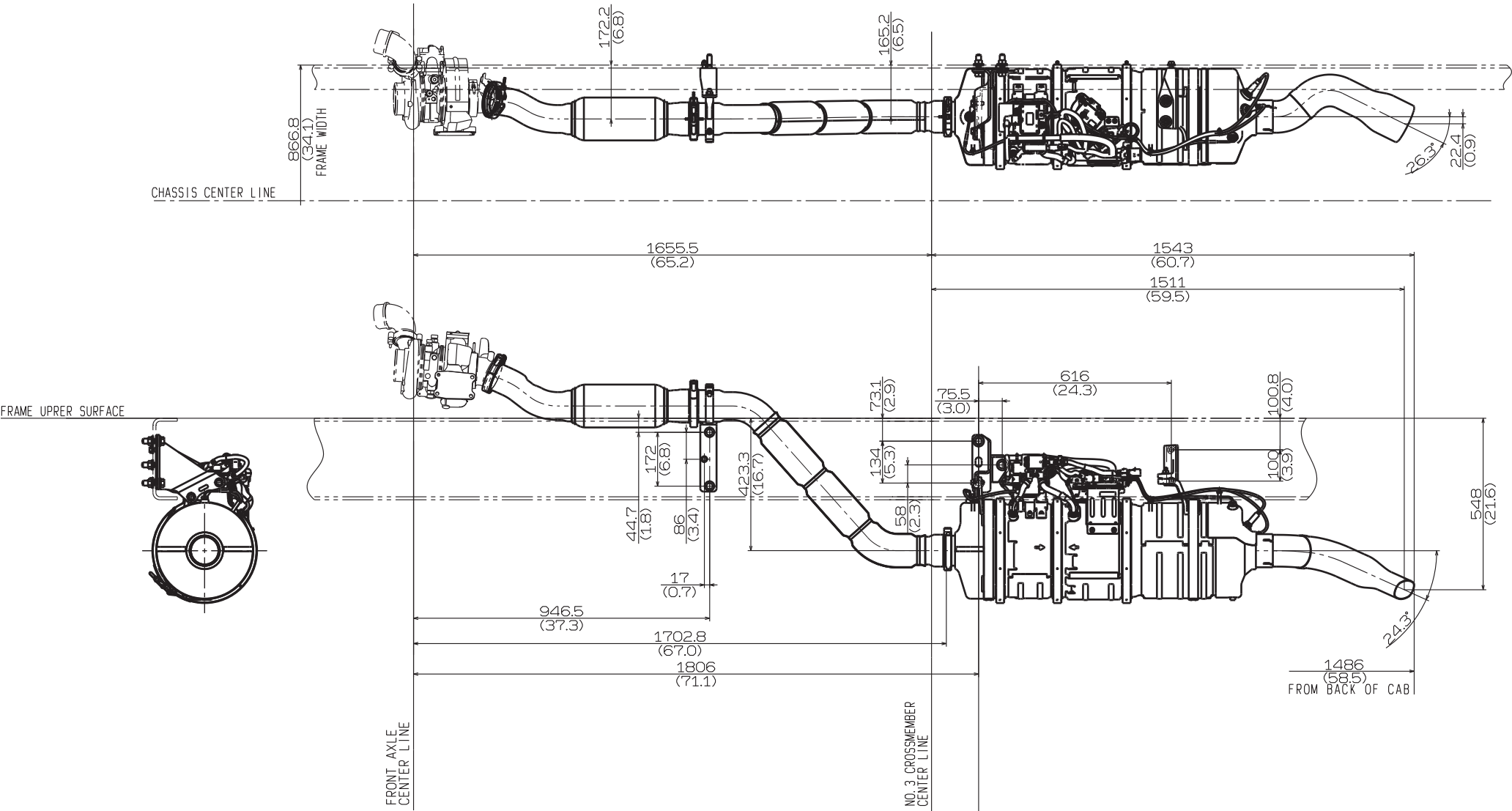
Unit : mm (in.)



3. EXHAUST SYSTEM

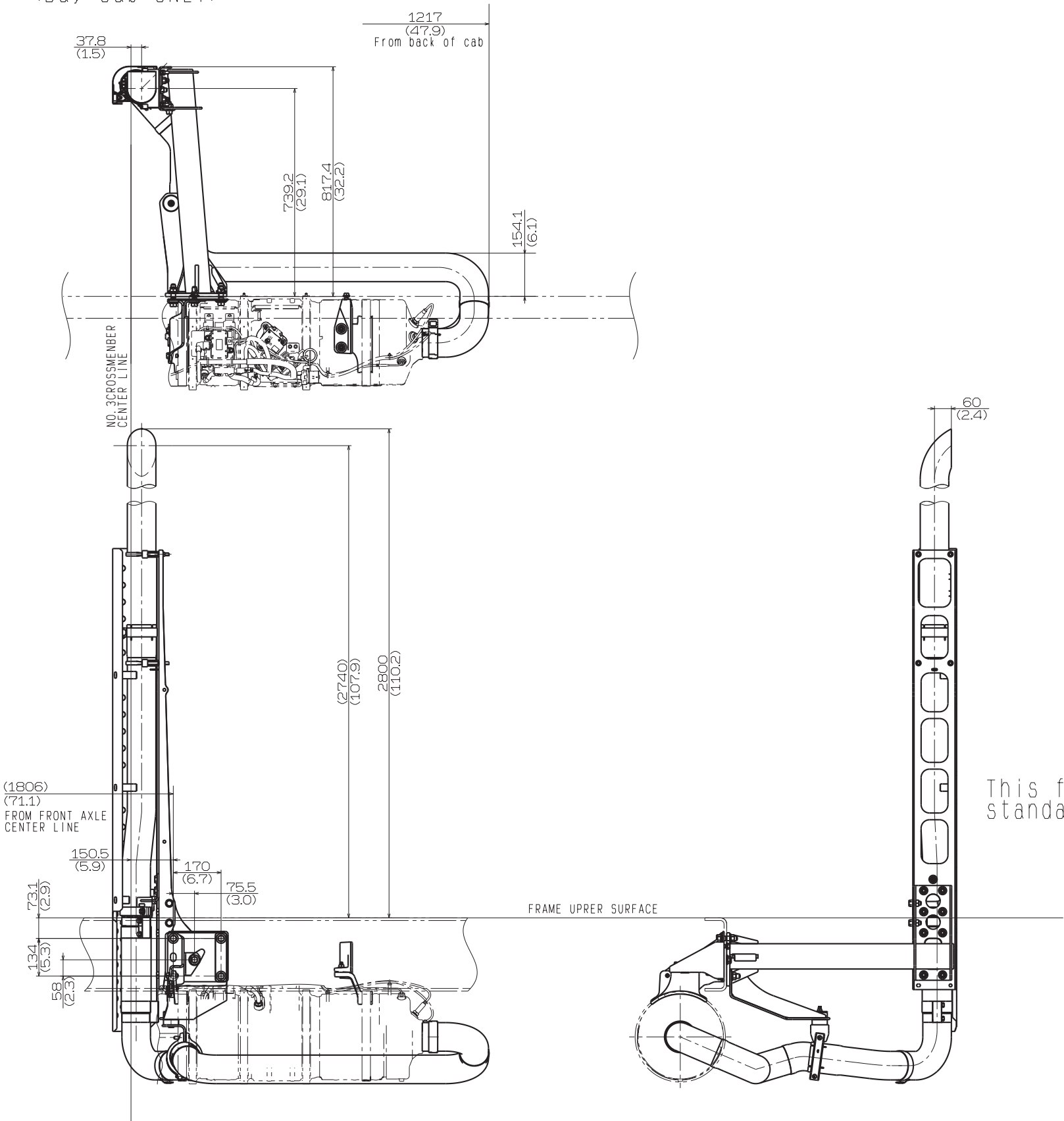
<Day Cab>

Unit : mm (in.)



VERTICAL TAIL
<Day Cab ONLY>

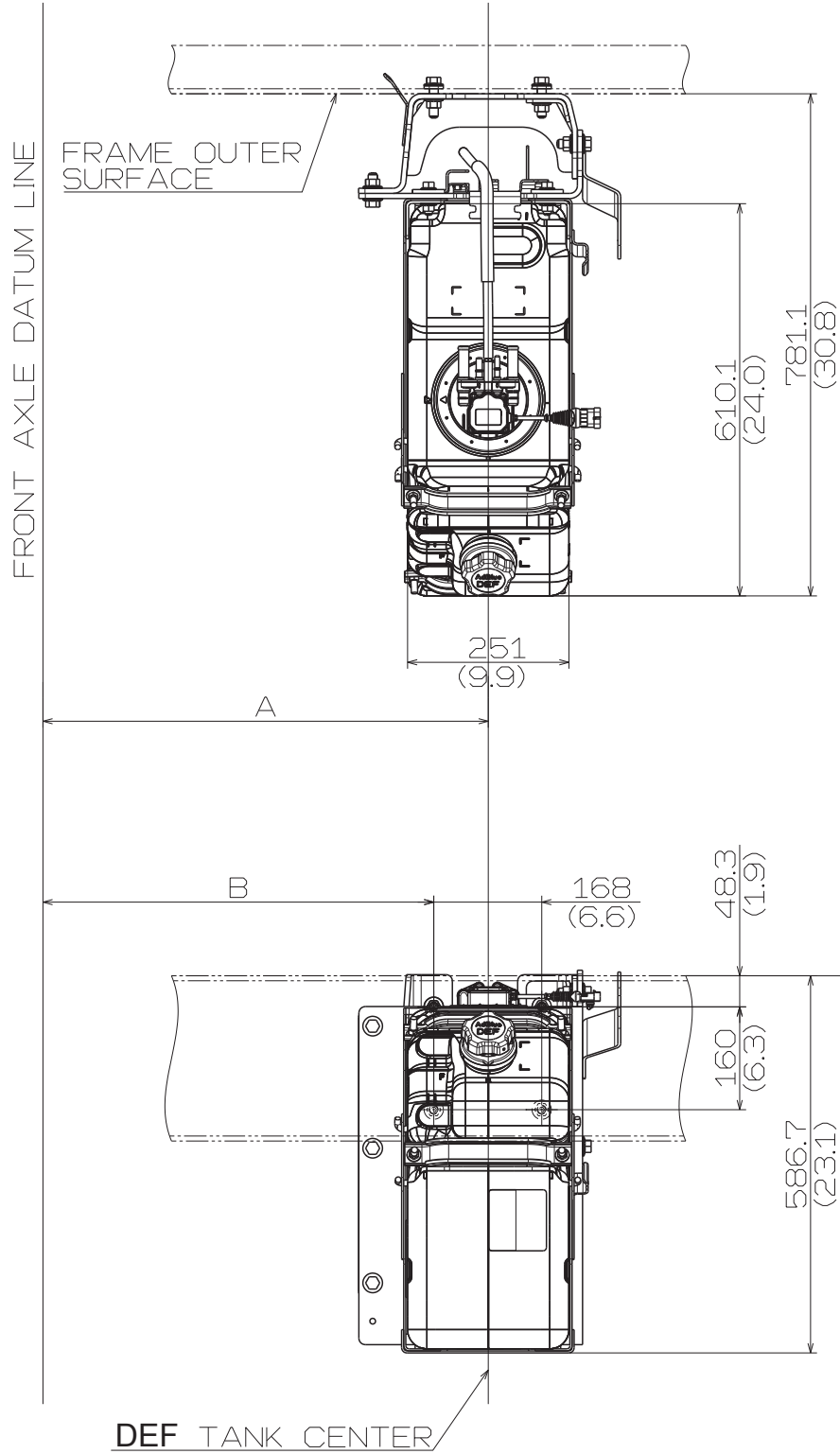
Unit : mm (in.)



4. DEF TANK

Unit : mm (in.)

OPTION
CAPACITY : 59L (15.6gal)



IN CASE OF
FRAME THICKNESS:7.8 (0.31)
FRAME HEIGHT:257.1 (10.1)

CAB SPECIFICATIONS	A	B
DAY CAB	2693 (106.0)	2608 (102.7)

