

Chapter 9

CHASSIS DRAWINGS

1. CAB DRAWINGS
2. CAB BACK DRAWINGS
3. CHASSIS DRAWINGS
4. CHASSIS FRAME DRAWINGS
5. REFERENCE FIGURE FOR SUSPENSION

ABOUT CAD-DATA

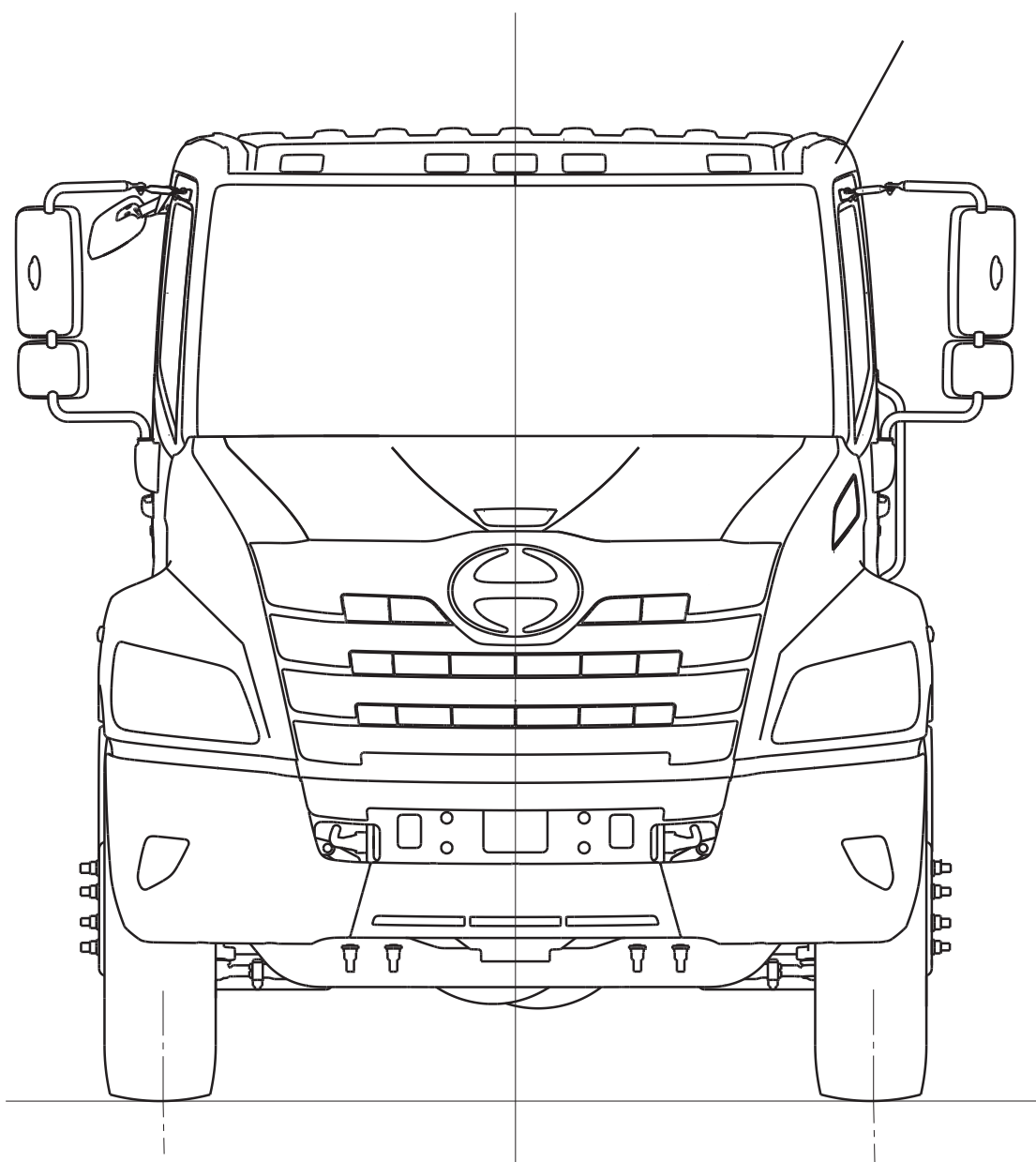
CAD-DATA is contained on separate attachment file in this CD-ROM.

CONTENTS ; CHASSIS DRAWING

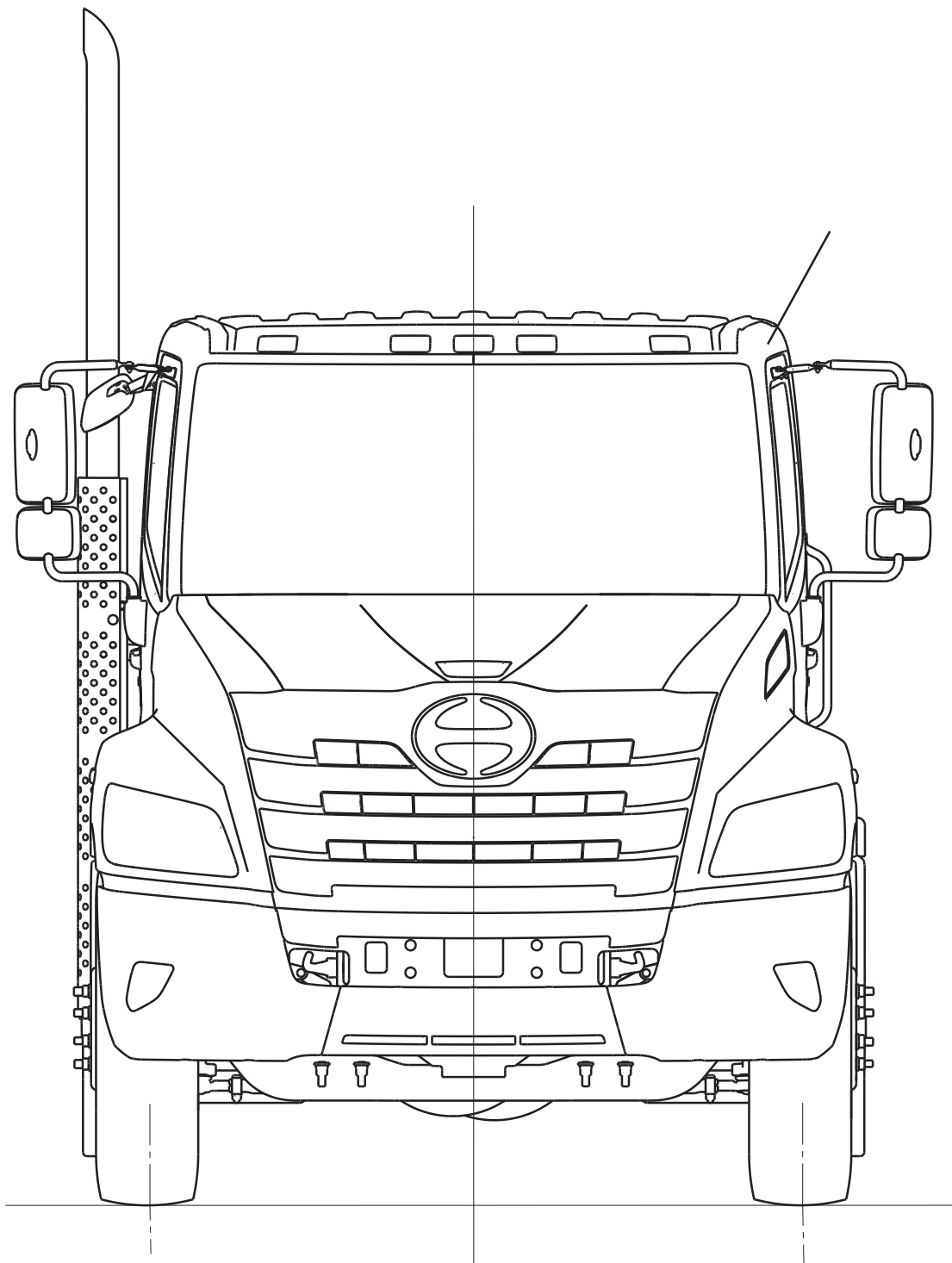
1. CAB DRAWINGS

MODEL : ALL

- FRONT SIDE VIEW
(HORIZONTAL TAIL)



- FRONT SIDE VIEW
(VERTICAL STACK TAIL)
< Day Cab ONLY >



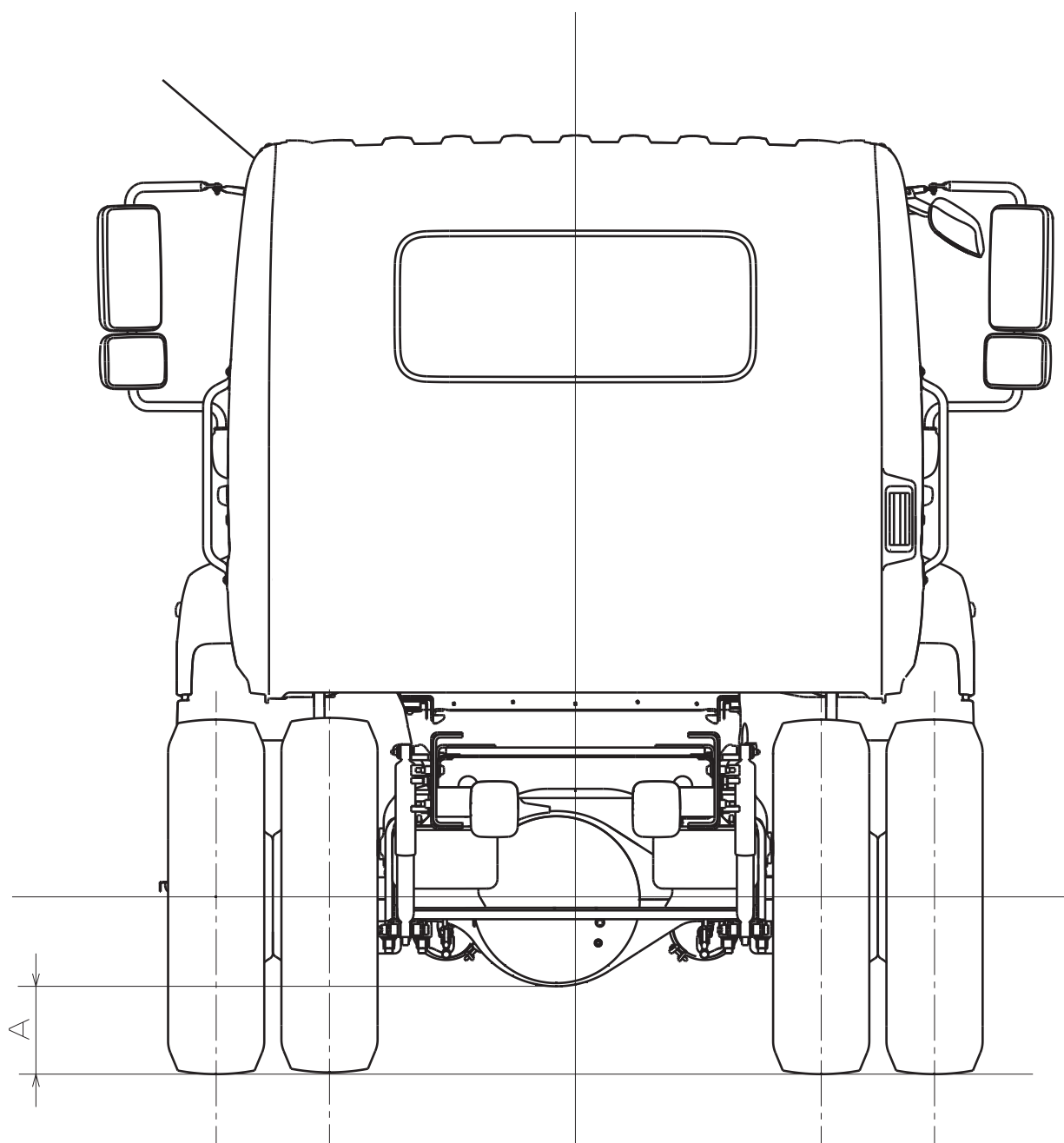
MODEL : NHC2(XL7&XL8)

- REAR SIDE VIEW
(REAR AIR SUSPENSION)

4X2 - AIR

Unit : mm (in.)

MODEL	RR AXLE	TIRE	A
XL7, XL8 (NHC2)	S23-172	11R22.5-14	220 (8.7)
		11R22.5-16	
		295/75R22.5-14	208 (8.2)
		295/75R22.5-16	
		12R22.5-16	235 (9.3)



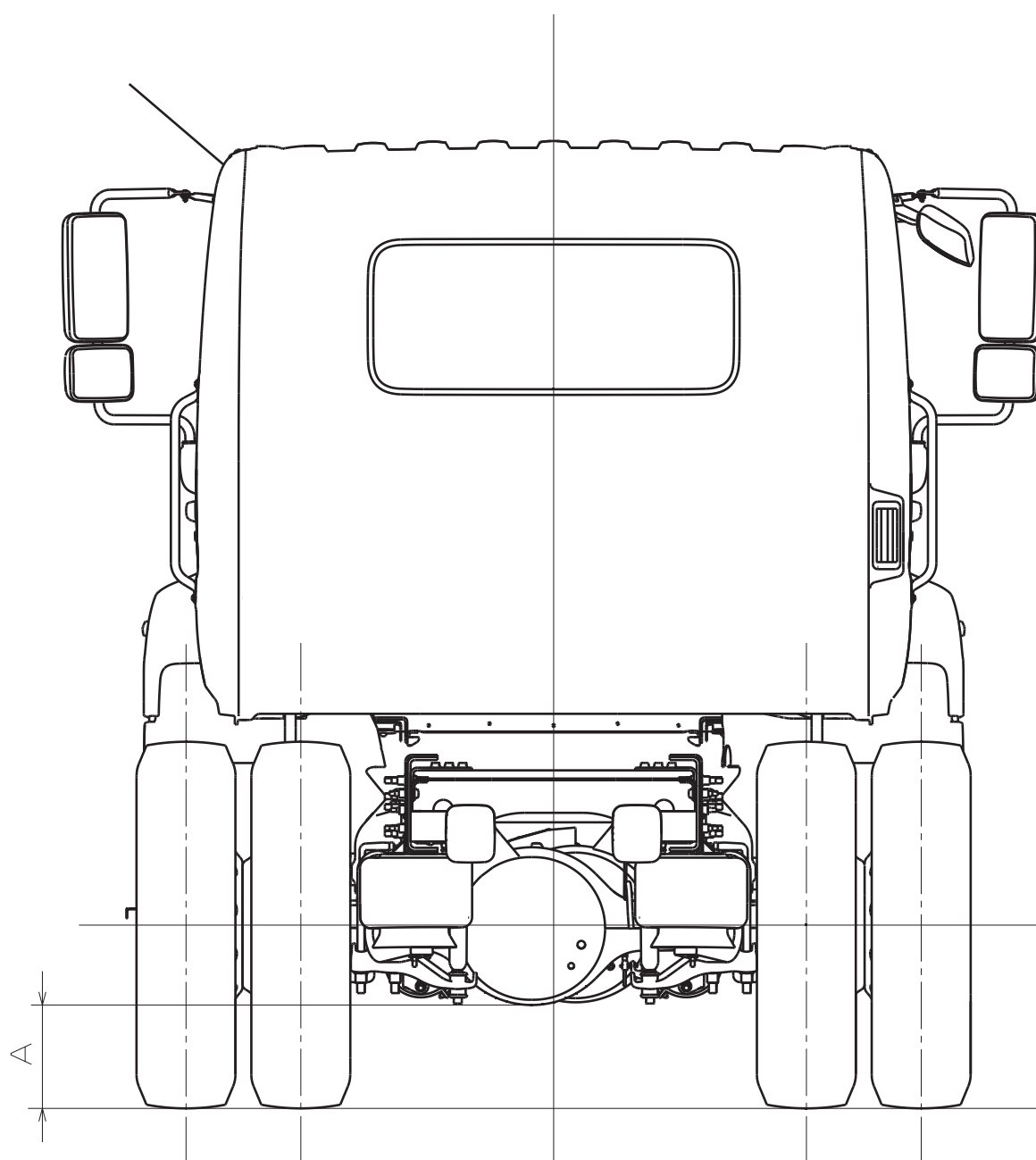
MODEL : NMC2(XL8)

- REAR SIDE VIEW
(REAR AIR SUSPENSION)

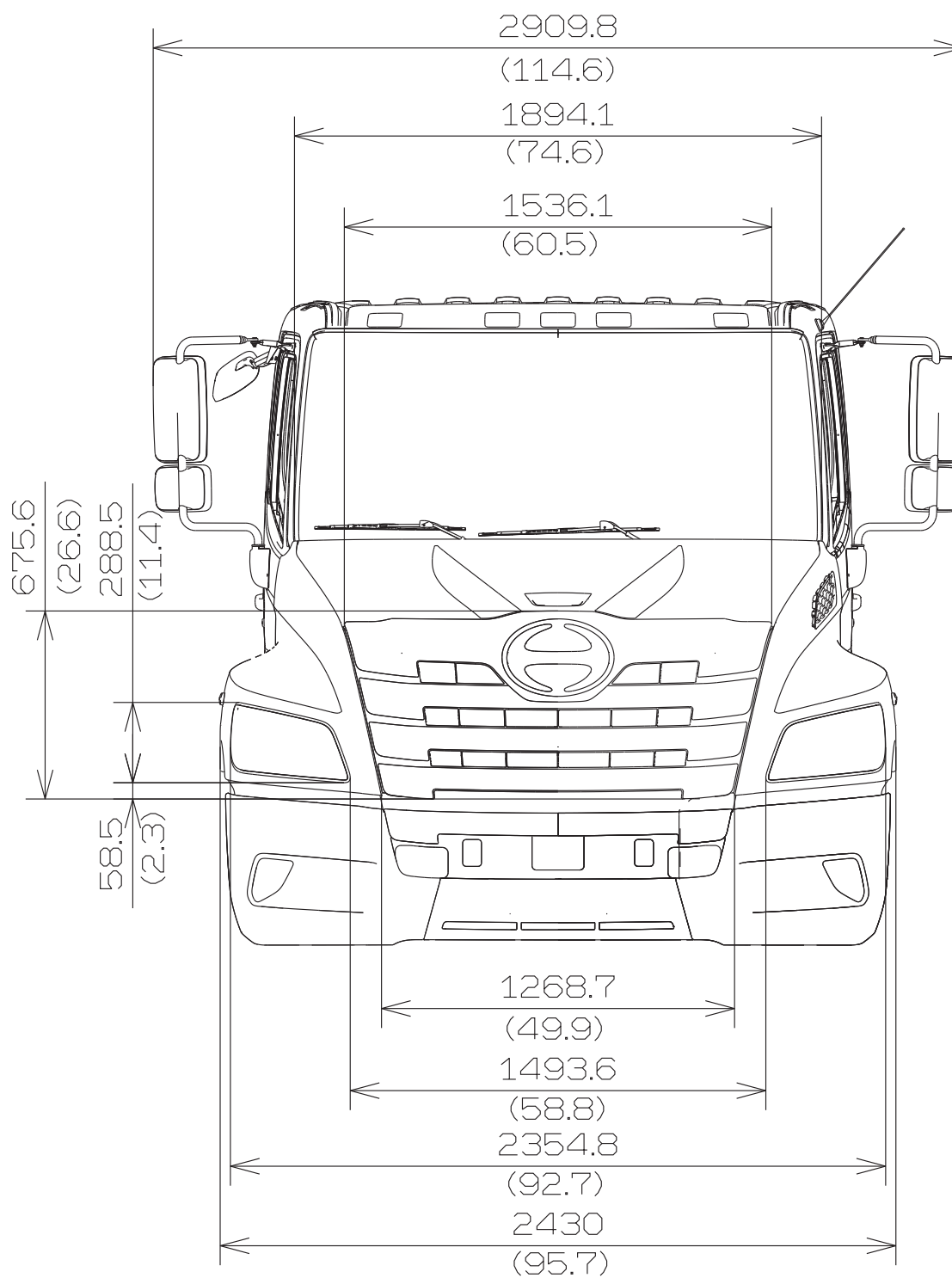
6X4 - AIR

Unit : mm (in.)

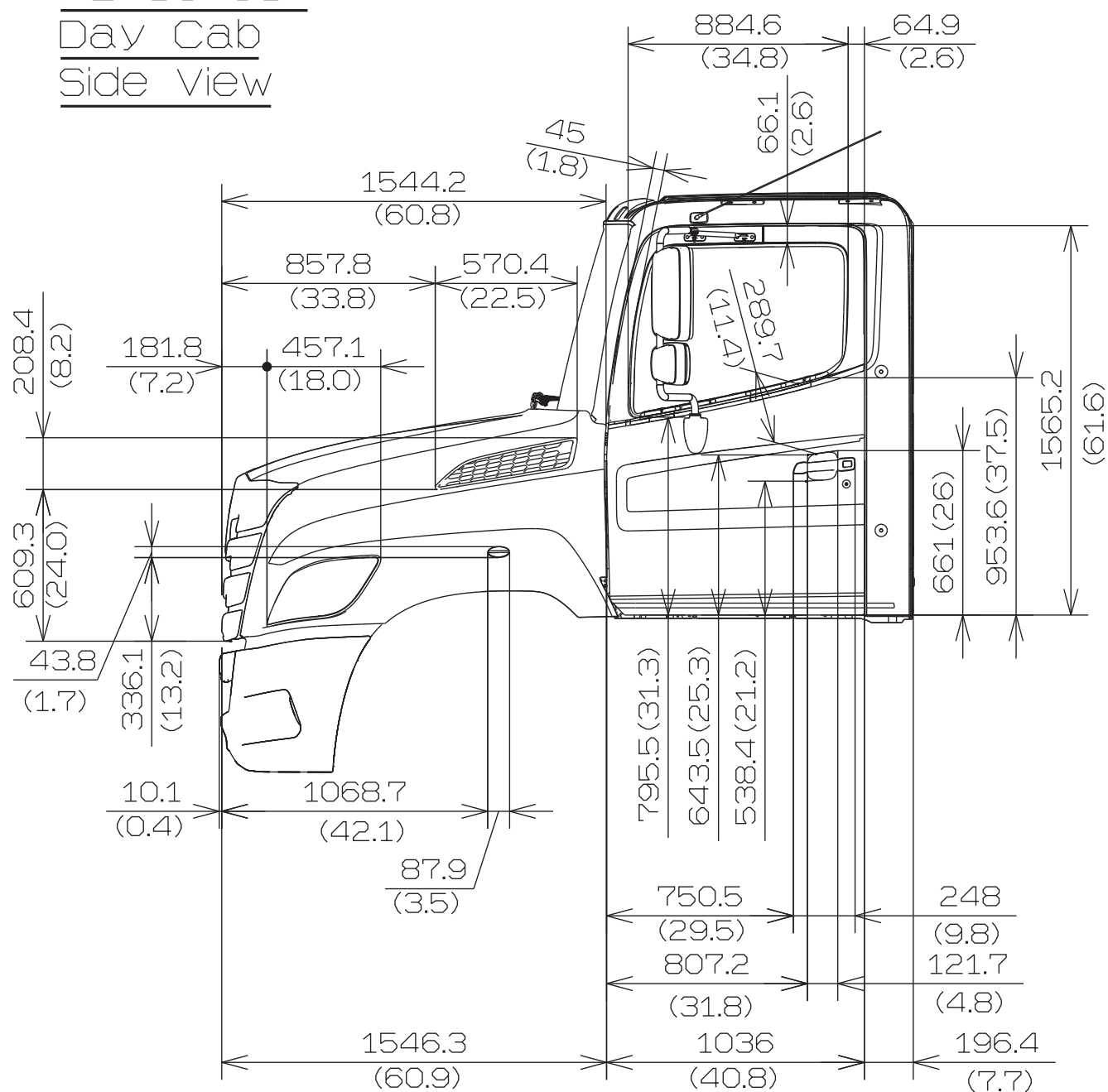
MODEL	RR AXLE	TIRE	A
XL8 (NMC2)	D46-172 (R1) R46-172 (R2)	11R22.5-14	225 (8.9)
		11R22.5-16	
		295/75R22.5-16	213 (8.4)
XL8 (NMC2)	DSH40 (R1) RSH40 (R2)	11R22.5-14	261 (10.3)
		11R22.5-16	
		295/75R22.5-16	250 (9.8)



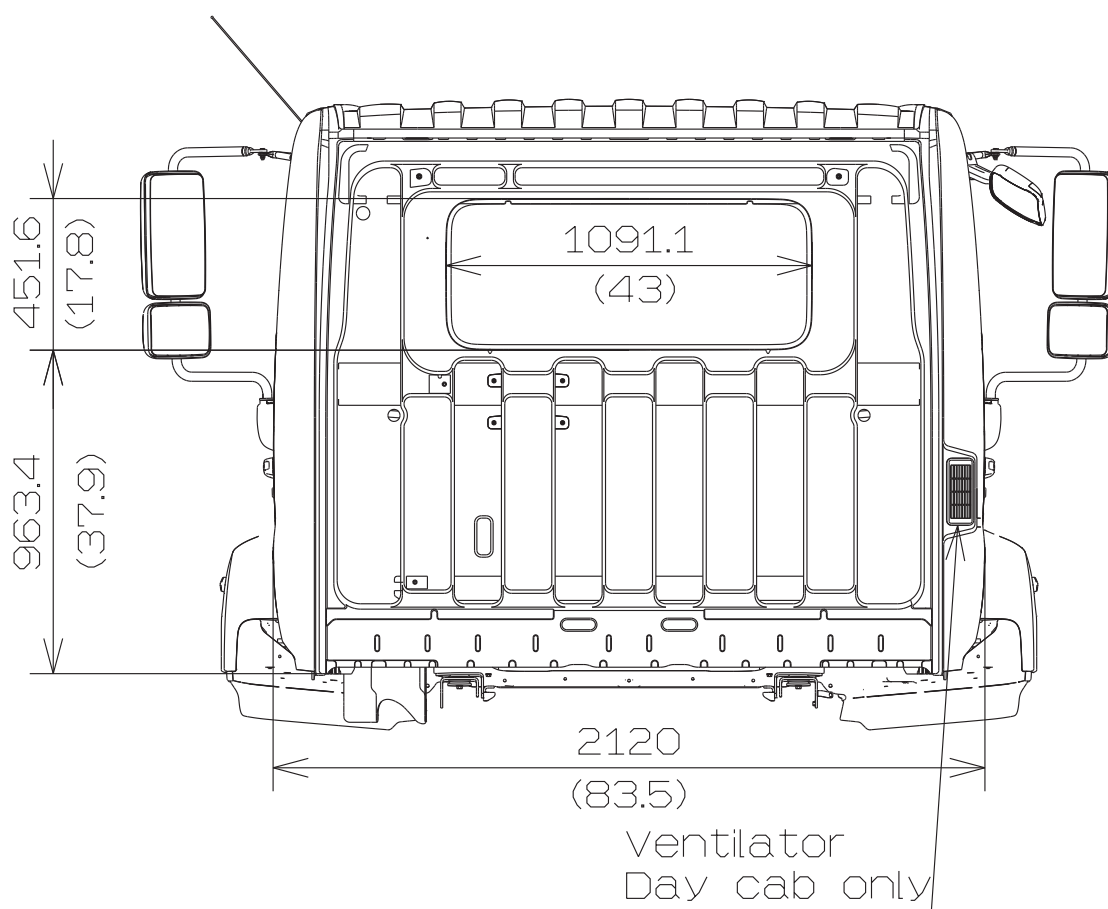
XL-Series
Day cab
Front View



XL-Series
Day Cab
Side View



XL-Series
Day cab
Rear View



2. CAB BACK DRAWINGS

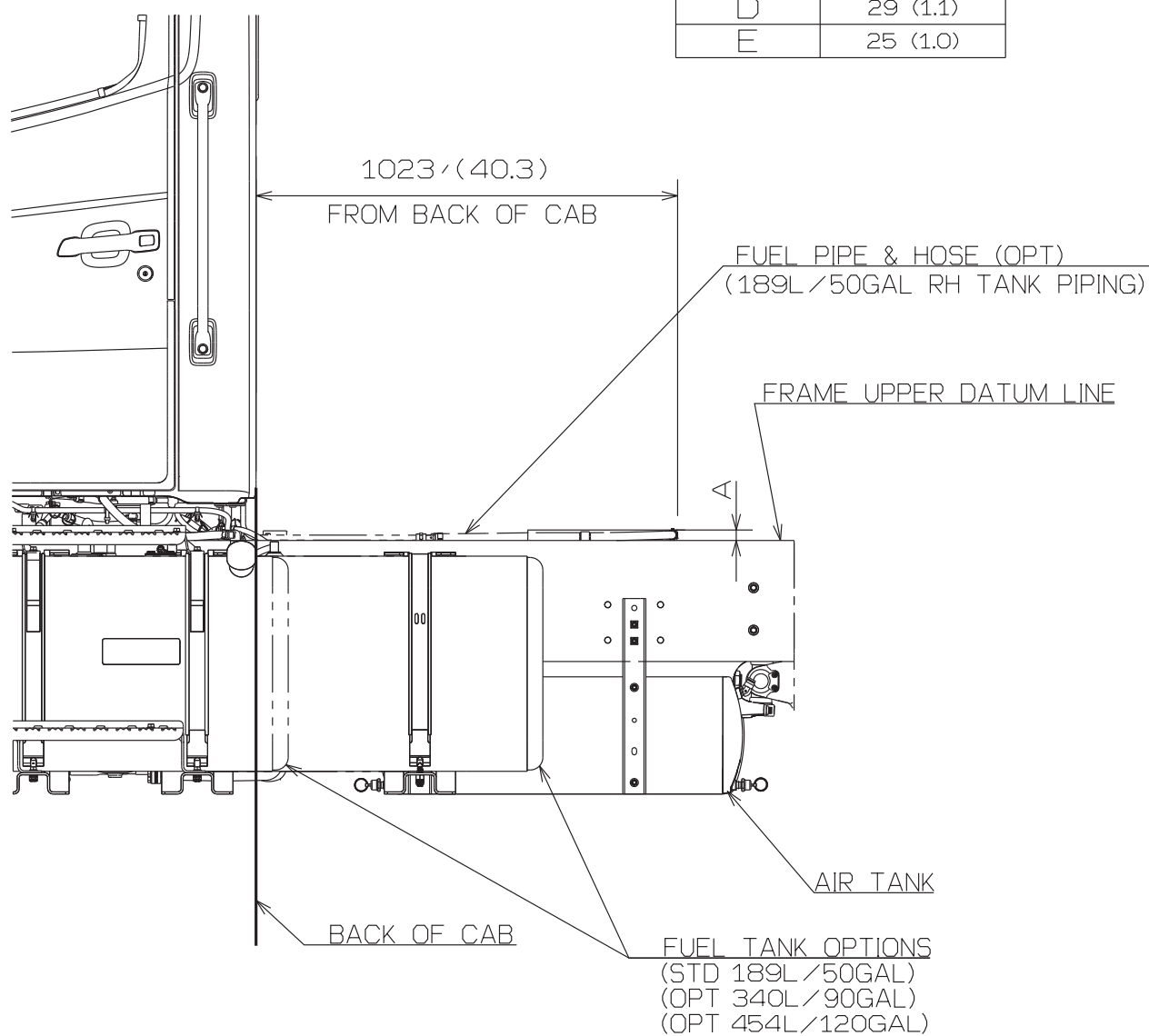
MODEL : NHC2(XL7&XL8) < Day Cab >
NMC2(XL8) < Day Cab >

Unit : mm (in.)

• LEFT SIDE VIEW

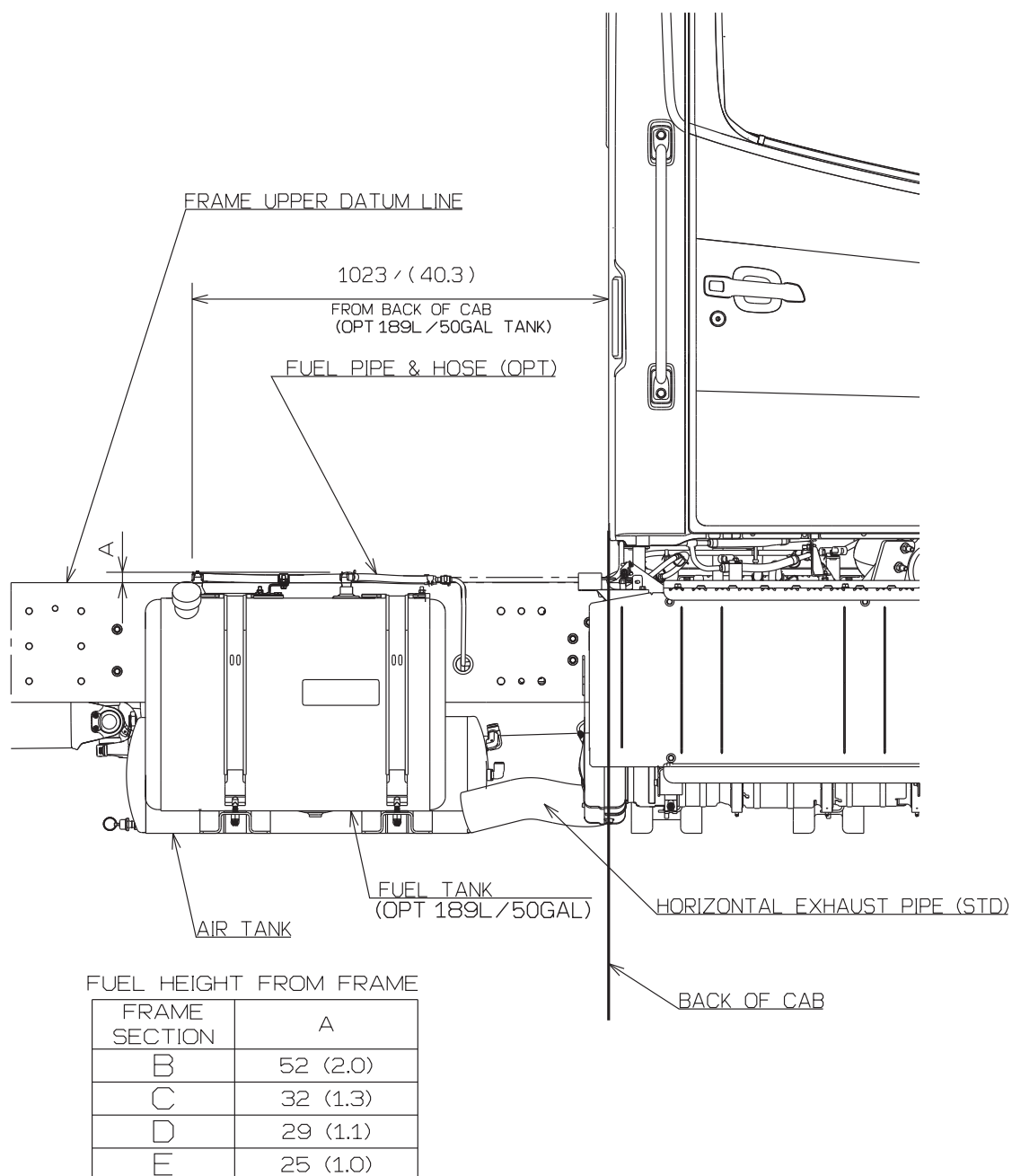
FUEL HEIGHT FROM FRAME

FRAME SECTION	A
B	52 (2.0)
C	32 (1.3)
D	29 (1.1)
E	25 (1.0)



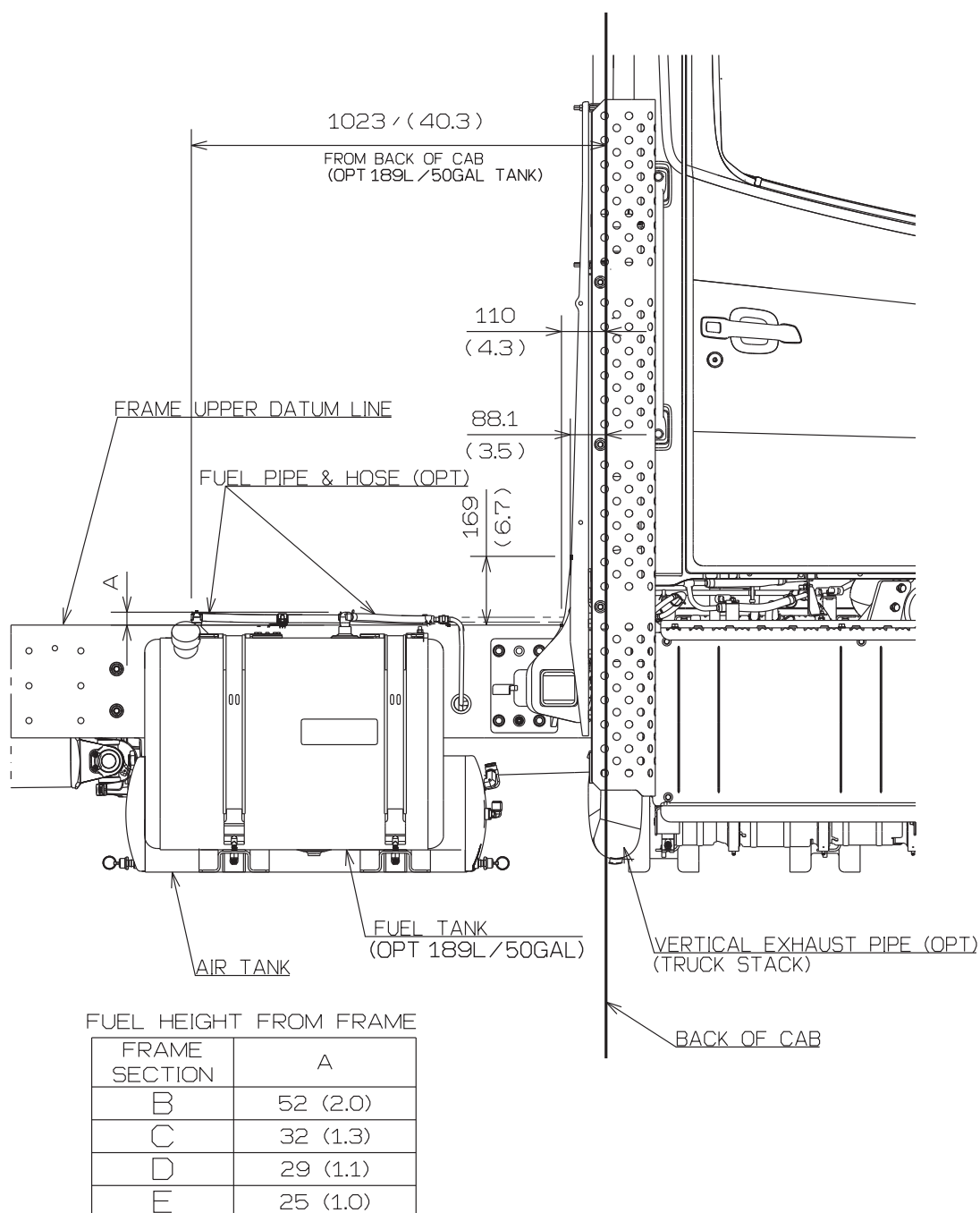
• RIGHT SIDE VIEW
(HORIZONTAL TAIL)

Unit : mm (in.)



- RIGHT SIDE VIEW
(VERTICAL STACK TAIL - TRUCK)
< Day Cab ONLY >

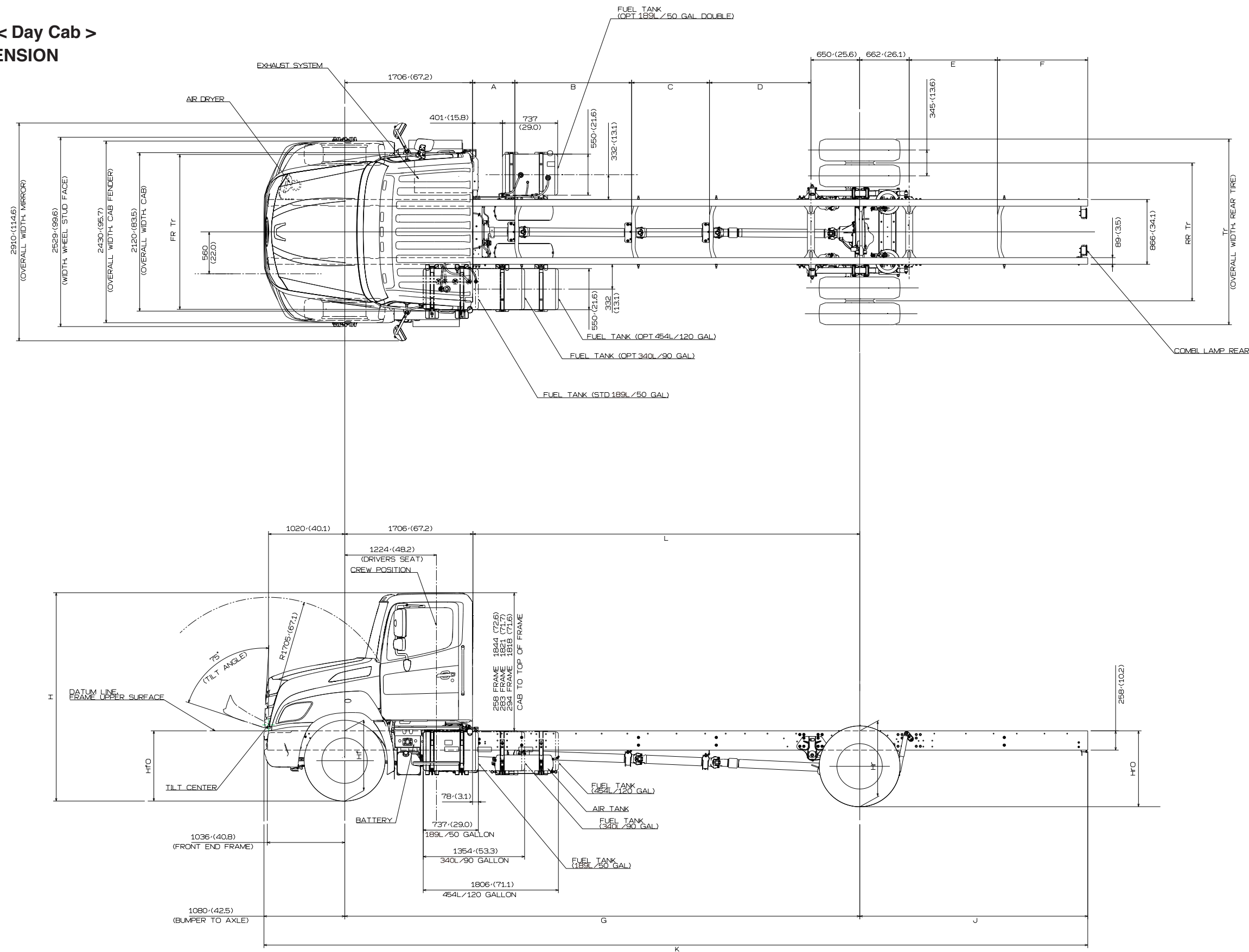
Unit : mm (in.)



3. CHASSIS DRAWINGS

Unit : mm (in.)

MODEL : NHC2(XL7&XL8) < Day Cab >
REAR AIR SUSPENSION



• **MODEL : NHC2(XL7&XL8) < Day Cab >**
REAR AIR SUSPENSION

DIMENSION OF CHASSIS

Unit : mm (in.)

Wheelbase		A	B	C	D	E	F	G	J	K	L
M	5207 (205)	711 (28)	930 (36.6)		1205 (47.4)	1346 (53.) 1181 (46.5)	623 (24.5)	5207 (205)	2007 (79) 2464 (97)	8293 (326.5) 8750 (344.5)	3500 (137.8)
P	5512 (217)	966 (38)	780 (30.7)		1405 (55.3)	1346 (53.) 1181 (46.5)	623 (24.5)	5512 (217)	2007 (79) 2464 (97)	8598 (338.5) 9055 (356.5)	3805 (149.8)
R	5969 (235)	1116 (43.9)	1110 (43.7)		1382 (54.4)	1346 (53.) 1181 (46.5)	623 (24.5)	5969 (235)	2007 (79) 2464 (97)	9055 (356.5) 9512 (374.5)	4262 (167.8)
T	6426 (253)	566 (22.3)	1500 (59.1)	770 (30.3)	1229 (48.4)	1346 (53.) 1181 (46.5)	623 (24.5)	6426 (253)	2007 (79) 2464 (97)	9512 (374.5) 9969 (392.5)	4719 (185.8)
V	6883 (271)	566 (22.3)	1560 (61.4)	1040 (40.9)	1356 (53.4)	1346 (53.) 1181 (46.5)	623 (24.5)	6883 (271)	2007 (79) 2464 (97)	9969 (392.5) 10426 (410.5)	5176 (203.8)
X	7341 (289)	711 (28)	1740 (68.5)	1145 (45.1)	1383 (54.4)	1346 (53.) 1181 (46.5)	623 (24.5)	7341 (289)	2007 (79) 2464 (97)	10426 (410.5) 10884 (428.5)	5633 (221.8)

• MODEL : NHC2(XL7&XL8) < Day Cab >
REAR AIR SUSPENSION

DIMENSION OF HEIGHT FROM GROUND

Unit : mm (in.)

FR AXLE	TIRE	WHEEL	WHEELBASE		GROUND HEIGHT FRAME UPPER SURFACE				H CAB	H Vert Stack	ROH
					HfO	Hf	Hr	HrO			
12000LBS	11R22.5	22.5X8.25	M	5207 (205)	891 (35.1)	903 (35.6)	968 (38.1)	999 (39.3)	2767 (108.9)	3726 (146.7)	2464 (97)
			P	5512 (217)	891 (35.1)	903 (35.6)	968 (38.1)	998 (39.3)	2766 (108.9)	3725 (146.7)	2464 (97)
			R	5969 (235)	892 (35.1)	903 (35.6)	968 (38.1)	1001 (39.4)	2765 (108.9)	3724 (146.6)	2464 (97)
			T	6426 (253)	893 (35.2)	903 (35.6)	968 (38.1)	994 (39.1)	2764 (108.8)	3722 (146.5)	2464 (97)
			V	6883 (271)	894 (35.2)	903 (35.6)	968 (38.1)	993 (39.1)	2763 (108.8)	3721 (146.5)	2464 (97)
			X	7341 (289)	919 (36.2)	928 (36.5)	993 (39.1)	1017 (40.)	2764 (108.8)	3722 (146.5)	2464 (97)
	FR 295/75R22.5 RR 295/75R22.5	22.5X8.25	M	5207 (205)	877 (34.5)	890 (35)	954 (37.6)	985 (38.8)	2754 (108.4)	3713 (146.2)	2464 (97)
			P	5512 (217)	878 (34.6)	890 (35)	954 (37.6)	984 (38.7)	2753 (108.4)	3712 (146.1)	2464 (97)
			R	5969 (235)	879 (34.6)	890 (35)	954 (37.6)	987 (38.9)	2751 (108.3)	3710 (146.1)	2464 (97)
			T	6426 (253)	880 (34.6)	890 (35)	954 (37.6)	980 (38.6)	2750 (108.3)	3709 (146)	2464 (97)
			V	6883 (271)	880 (34.6)	890 (35)	954 (37.6)	979 (38.5)	2749 (108.2)	3708 (146)	2464 (97)
			X	7341 (289)	906 (35.7)	915 (36)	979 (38.5)	1003 (39.5)	2750 (108.3)	3709 (146)	2464 (97)

• MODEL : NHC2(XL7&XL8) < Day Cab >
REAR AIR SUSPENSION

DIMENSION OF HEIGHT FROM GROUND

Unit : mm (in.)

FR AXLE	TIRE	WHEEL	WHEELBASE		GROUND HEIGHT FRAME UPPER SURFACE				H CAB	H Vert Stack	ROH
					HfO	Hf	Hr	HrO			
14600lbs	11R22.5	22.5X8.25	M	5207 (205)	879 (34.6)	894 (35.2)	971 (38.2)	1002 (39.4)	2761 (108.7)	3721 (146.5)	2464 (97)
			P	5512 (217)	880 (34.6)	894 (35.2)	971 (38.2)	1001 (39.4)	2760 (108.7)	3719 (146.4)	2464 (97)
			R	5969 (235)	881 (34.7)	894 (35.2)	971 (38.2)	1004 (39.5)	2758 (108.6)	3718 (146.4)	2464 (97)
			T	6426 (253)	907 (35.7)	919 (36.2)	996 (39.2)	1022 (40.2)	2759 (108.6)	3718 (146.4)	2464 (97)
			V	6883 (271)	907 (35.7)	919 (36.2)	996 (39.2)	1020 (40.2)	2758 (108.6)	3717 (146.3)	2464 (97)
			X	7341 (289)	908 (35.7)	919 (36.2)	996 (39.2)	1019 (40.1)	2757 (108.5)	3716 (146.3)	2464 (97)
	FR 295/75R22.5 RR 295/75R22.5	22.5X8.25	M	5207 (205)	868 (34.2)	882 (34.7)	954 (37.6)	988 (38.9)	2748 (108.2)	3707 (145.9)	2464 (97)
			P	5512 (217)	868 (34.2)	882 (34.7)	954 (37.6)	986 (38.8)	2747 (108.1)	3706 (145.9)	2464 (97)
			R	5969 (235)	869 (34.2)	882 (34.7)	954 (37.6)	990 (39)	2745 (108.1)	3704 (145.8)	2464 (97)
			T	6426 (253)	895 (35.2)	907 (35.7)	979 (38.5)	1007 (39.6)	2746 (108.1)	3705 (145.9)	2464 (97)
			V	6883 (271)	896 (35.3)	907 (35.7)	979 (38.5)	1006 (39.6)	2745 (108.1)	3704 (145.8)	2464 (97)
			X	7341 (289)	897 (35.3)	907 (35.7)	979 (38.5)	1005 (39.6)	2744 (108)	3702 (145.7)	2464 (97)
	12R22.5	22.5X9.00	M	5207 (205)	903 (35.6)	914 (36)	971 (38.2)	991 (39.)	2775 (109.3)	3734 (147)	2464 (97)
			P	5512 (217)	903 (35.6)	914 (36)	971 (38.2)	990 (39.)	2775 (109.3)	3733 (147)	2464 (97)
			R	5969 (235)	904 (35.6)	914 (36)	971 (38.2)	992 (39.1)	2773 (109.2)	3732 (146.9)	2464 (97)
			T	6426 (253)	930 (36.6)	939 (37)	996 (39.2)	1012 (39.8)	2774 (109.2)	3733 (147)	2464 (97)
			V	6883 (271)	930 (36.6)	939 (37)	996 (39.2)	1011 (39.8)	2773 (109.2)	3732 (146.9)	2464 (97)
			X	7341 (289)	931 (36.7)	939 (37)	996 (39.2)	1010 (39.8)	2773 (109.2)	3731 (146.9)	2464 (97)
	315/80R22.5	22.5X9.00	M	5207 (205)	911 (35.9)	920 (36.2)	968 (38.1)	992 (39.1)	2779 (109.4)	3738 (147.2)	2464 (97)
			P	5512 (217)	911 (35.9)	920 (36.2)	968 (38.1)	991 (39.)	2778 (109.4)	3737 (147.1)	2464 (97)
			R	5969 (235)	912 (35.9)	920 (36.2)	968 (38.1)	993 (39.1)	2777 (109.3)	3736 (147.1)	2464 (97)
			T	6426 (253)	937 (36.9)	945 (37.2)	993 (39.1)	1013 (39.9)	2778 (109.4)	3737 (147.1)	2464 (97)
			V	6883 (271)	938 (36.9)	945 (37.2)	993 (39.1)	1012 (39.8)	2778 (109.4)	3736 (147.1)	2464 (97)
			X	7341 (289)	938 (36.9)	945 (37.2)	993 (39.1)	1011 (39.8)	2777 (109.3)	3735 (147)	2464 (97)

• **MODEL : NHC2(XL7&XL8) < Day Cab >**
REAR AIR SUSPENSION

DIMENSION OF HEIGHT FROM GROUND

Unit : mm (in.)

FR AXLE	TIRE	WHEEL	WHEELBASE		GROUND HEIGHT FRAME UPPER SURFACE				H CAB	H Vert Stack	ROH
					HfO	Hf	Hr	HrO			
16000lbs	315/80R22.5	22.5X9.00	M	5207 (205)	918 (36.1)	926 (36.5)	968 (38.1)	991 (39.)	2784 (109.6)	3742 (147.3)	2464 (97)
			P	5512 (217)	944 (37.2)	951 (37.4)	993 (39.1)	1015 (40.)	2785 (109.6)	3743 (147.4)	2464 (97)
			T	6426 (253)	945 (37.2)	951 (37.4)	993 (39.1)	1013 (39.9)	2783 (109.6)	3741 (147.3)	2464 (97)

[NOTE]

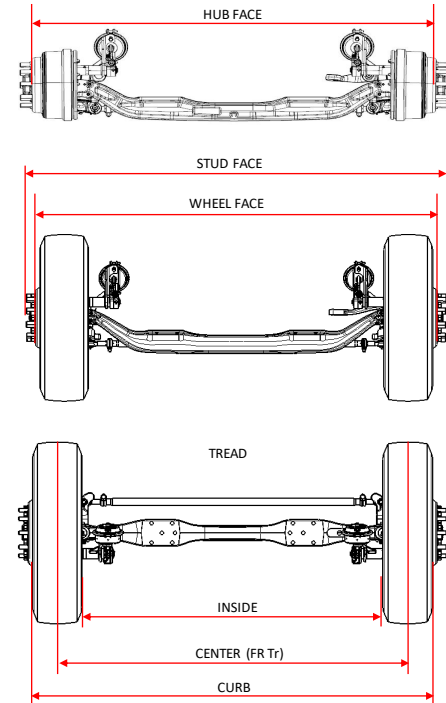
- FRAME HEIGHTS ARE BASED ON SMALLEST FRAME SECTION AVAILABLE FOR A GIVEN WHEELBASE AND GAWR.
- HEIGHTS BASED ON 11R22.5 REAR TIRES UNLESS SHOWN OTHERWISE.
- ADDITIONAL DIMENSIONS CAN BE PROVIDED WITH REQUEST TO SALES REP.

• **MODEL : NHC2(XL7&XL8) < Day Cab >**
REAR AIR SUSPENSION

Unit : mm (in.)

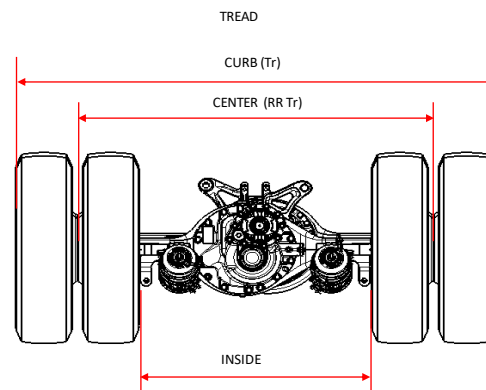
DIMENSION OF WIDTH : FRONT

MODEL	FR AXLE	TIRE	WHEEL	DISC	BRAKES	FR Tr	FR CURB	FR WHL	FR STUD			
NHC2 (XL7&XL8)	12000LBS	11R22.5	22.5X8.25	ALUM	DRUM / DISC	2103 (82.8)	2382 (93.8)	2439 (96)	2532 (99.7)			
				STEEL		2081 (81.9)	2360 (92.9)	2416 (95.1)				
		295/75R22.5		ALUM		2103 (82.8)	2394 (94.2)	2439 (96)				
				STEEL		2081 (81.9)	2372 (93.4)	2416 (95.1)				
	14600LBS	11R22.5	22.5X8.25	ALUM		2103 (82.8)	2382 (93.8)	2439 (96)	2532 (99.7)			
				STEEL		2081 (81.9)	2360 (92.9)	2416 (95.1)				
				295/75R22.5		ALUM	2103 (82.8)	2394 (94.2)		2439 (96)		
						STEEL	2081 (81.9)	2372 (93.4)		2416 (95.1)		
		12R22.5	22.5X9.00	ALUM	2088 (82.2)	2388 (94)	2444 (96.2)					
				STEEL	2070 (81.5)	2370 (93.3)	2426 (95.5)					
				315/80R22.5	ALUM	2088 (82.2)	2400 (94.5)	2444 (96.2)				
					STEEL	2070 (81.5)	2382 (93.8)	2426 (95.5)				
		16000LBS		315/80R22.5	22.5X9.00	STEEL	DRUM	2070 (81.5)		2382 (93.8)	2362 (93)	2472 (97.3)
							DISC	2084 (82.1)		2396 (94.3)	2377 (93.6)	2481 (97.7)



DIMENSION OF WIDTH : REAR

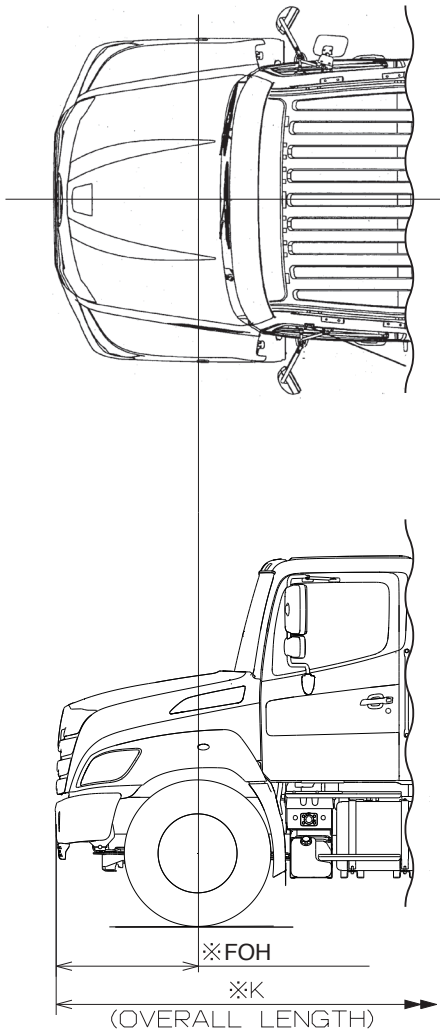
MODEL	RR AXLE	TIRE	WHEEL	DISC	BRAKES	RR Tr	Tr
NHC2 (XL7&XL8)	21000LBS / 23000LBS	11R22.5	22.5X8.25	ALUM	DRUM	1865 (73.4)	2480 (97.6)
				STEEL		1843 (72.6)	2457 (96.7)
				ALUM		1865 (73.4)	2491 (98.1)
				STEEL		1843 (72.6)	2469 (97.2)
		295/75R22.5	22.5X9.00	ALUM		1871 (72.9)	2526 (98.7)
				STEEL		1853 (72.9)	2508 (98.7)
				ALUM		1864 (73.4)	2478 (97.6)
				STEEL		1841 (72.5)	2456 (96.7)
		12R22.5	22.5X8.25	ALUM	DISC	1864 (73.4)	2489 (98)
				STEEL		1841 (72.5)	2467 (97.1)
				ALUM		1869 (73.6)	2525 (99.4)
				STEEL		1851 (72.9)	2507 (98.7)



NOTE: Additional dimensions can be provided with request to Sales Rep.

• MODEL : NHC2(XL7&XL8) < Day Cab >
REAR AIR SUSPENSION

OPTIONAL BUMPER



DIMENSION OF CHASSIS

Unit : mm (in.)

Wheelbase		FOH	K
M	5207 (205)	1181	8394 (330.5)
		(46.5)	8852 (348.5)
P	5512 (217)	1181	8699 (342.5)
		(46.5)	9156 (360.5)
R	5969 (235)	1181	9156 (360.5)
		(46.5)	9614 (378.5)
T	6426 (253)	1181	9614 (378.5)
		(46.5)	10071 (396.5)
V	6883 (271)	1181	10071 (396.5)
		(46.5)	10528 (414.5)
X	7341 (289)	1181	10528 (414.5)
		(46.5)	10985 (432.5)

NOTE:1.FIGURES MARKED "※" ARE DIMENSIONS MEASURED
 IN PARALLEL WITH THE SURFACE OF THE GROUND.
 2.DIMENSIONS IN () ARE INCHES.

Unit : mm (in.)



• **MODEL : NMC2(XL8) < Day Cab >**
REAR AIR SUSPENSION

DIMENSION OF CHASSIS

Unit : mm (in.)

Wheelbase		A	B	D	E	F	G	J	K	L
K	4623 (182)	566 (22.3)		985 (38.8)	632 (24.9)	460 (18.1)	4623 (182)	2464 (97)	8166 (321.5)	2916 (114.8)
L	4928 (194)	566 (22.3)		1290 (50.8)	632 (24.9)	460 (18.1)	4928 (194)	2464 (97)	8471 (333.5)	3220 (126.8)
N	5436 (214)	966 (38)	810 (31.9)	588 (23.1)	632 (24.9)	460 (18.1)	5436 (214)	2464 (97)	8979 (353.5)	3728 (146.8)
R	5918 (233)	711 (28)	840 (33.1)	1296 (51)	632 (24.9)	460 (18.1)	5918 (233)	2464 (97)	9461 (372.5)	4211 (165.8)
U	6629 (261)	1116 (43.9)	1075 (42.3)	1367 (53.8)	632 (24.9)	460 (18.1)	6629 (261)	2464 (97)	10172 (400.5)	4922 (193.8)
U option	6731 (265)	1116 (43.9)	1075 (42.3)	1468 (57.8)	632 (24.9)	460 (18.1)	6731 (265)	2464 (97)	10274 (404.5)	5024 (197.8)
V	6985 (275)	1116 (43.9)	1290 (50.8)	1507 (59.3)	632 (24.9)	460 (18.1)	6985 (275)	2464 (97)	10528 (414.5)	5278 (207.8)
W	7137 (281)	1116 (43.9)	1440 (56.7)	1510 (59.4)	632 (24.9)	460 (18.1)	7137 (281)	2464 (97)	10680 (420.5)	5430 (213.8)

• **MODEL : NMC2(XL8) < Day Cab >**
REAR AIR 40K SUSPENSION

DIMENSION OF HEIGHT FROM GROUND

Unit : mm (in.)

FR AXLE	TIRE	WHEEL	WHEELBASE		GROUND HEIGHT FRAME UPPER SURFACE				H CAB	H Vert Stack	ROH
					HfO	Hf	Hr	HrO			
14600lbs	11R22.5	22.5X8.25	K	4623 (182)	899	914	983	1039	2761	3721	2464
					(35.4)	(36)	(38.7)	(40.9)	(108.7)	(146.5)	(97)
			L	4928 (194)	899	914	983	1036	2760	3719	2464
					(35.4)	(36)	(38.7)	(40.8)	(108.7)	(146.4)	(97)
			N	5436 (214)	901	914	983	1032	2758	3717	2464
					(35.5)	(36)	(38.7)	(40.6)	(108.6)	(146.3)	(97)
			R	5918 (233)	902	917	983	1030	2757	3715	2464
					(35.5)	(36.1)	(38.7)	(40.6)	(108.5)	(146.3)	(97)
	U	6629 (261)	908	919	988	1031	2757	3715	2464		
			(35.7)	(36.2)	(38.9)	(40.6)	(108.5)	(146.3)	(97)		
	U option	6731 (265)	908	919	988	1031	2756	3715	2464		
			(35.7)	(36.2)	(38.9)	(40.6)	(108.5)	(146.3)	(97)		
	V	6985 (275)	915	925	994	1039	2760	3719	2464		
			(36)	(36.4)	(39.1)	(40.9)	(108.7)	(146.4)	(97)		
	W	7137 (281)	915	925	994	1039	2760	3718	2464		
			(36)	(36.4)	(39.1)	(40.9)	(108.7)	(146.4)	(97)		
	FR 295/75R22.5 RR 295/75R22.5	22.5X8.25	K	4623 (182)	887	902	968	1023	2749	3708	2464
					(34.9)	(35.5)	(38.1)	(40.3)	(108.2)	(146)	(97)
			L	4928 (194)	888	902	968	1020	2747	3707	2464
					(35)	(35.5)	(38.1)	(40.2)	(108.1)	(145.9)	(97)
			N	5436 (214)	889	902	968	1017	2745	3704	2464
					(35)	(35.5)	(38.1)	(40)	(108.1)	(145.8)	(97)
			R	5918 (233)	890	902	968	1014	2744	3703	2464
					(35)	(35.5)	(38.1)	(39.9)	(108)	(145.8)	(97)
	U	6629 (261)	897	907	973	1016	2744	3703	2464		
			(35.3)	(35.7)	(38.3)	(40)	(108)	(145.8)	(97)		
	U option	6731 (265)	897	907	973	1015	2744	3703	2464		
			(35.3)	(35.7)	(38.3)	(40)	(108)	(145.8)	(97)		
	V	6985 (275)	904	913	979	1024	2748	3706	2464		
			(35.6)	(35.9)	(38.5)	(40.3)	(108.2)	(145.9)	(97)		
	W	7137 (281)	904	913	979	1024	2747	3706	2464		
			(35.6)	(35.9)	(38.5)	(40.3)	(108.1)	(145.9)	(97)		
12R22.5	22.5X9.00	K	4623 (182)	923	934	983	1028	2775	3734	2464	
				(36.3)	(36.8)	(38.7)	(40.5)	(109.3)	(147)	(97)	
		L	4928 (194)	924	934	983	1026	2774	3733	2464	
				(36.4)	(36.8)	(38.7)	(40.4)	(109.2)	(147)	(97)	
		N	5436 (214)	925	934	983	1023	2773	3731	2464	
				(36.4)	(36.8)	(38.7)	(40.3)	(109.2)	(146.9)	(97)	
		R	5918 (233)	925	934	983	1021	2771	3730	2464	
				(36.4)	(36.8)	(38.7)	(40.2)	(109.1)	(146.9)	(97)	
U	6629 (261)	931	939	988	1024	2772	3730	2464			
		(36.7)	(37)	(38.9)	(40.3)	(109.1)	(146.9)	(97)			
U option	6731 (265)	931	939	988	1023	2772	3730	2464			
		(36.7)	(37)	(38.9)	(40.3)	(109.1)	(146.9)	(97)			
V	6985 (275)	938	945	994	1032	2776	3734	2464			
		(36.9)	(37.2)	(39.1)	(40.6)	(109.3)	(147)	(97)			
W	7137 (281)	938	945	994	1032	2776	3734	2464			
		(36.9)	(37.2)	(39.1)	(40.6)	(109.3)	(147)	(97)			
FR 315/80R22.5 RR 295/75R22.5	FR 22.5X9.00 RR 22.5x8.25	K	4623 (182)	934	940	968	1003	2774	3732	2464	
				(36.8)	(37)	(38.1)	(39.5)	(109.2)	(146.9)	(97)	
		L	4928 (194)	934	940	968	1001	2774	3732	2464	
				(36.8)	(37)	(38.1)	(39.4)	(109.2)	(146.9)	(97)	
		N	5436 (214)	935	940	968	999	2773	3731	2464	
				(36.8)	(37)	(38.1)	(39.3)	(109.2)	(146.9)	(97)	
		R	5918 (233)	935	940	968	998	2772	3730	2464	
				(36.8)	(37)	(38.1)	(39.3)	(109.1)	(146.9)	(97)	
U	6629 (261)	941	945	973	1001	2774	3731	2464			
		(37)	(37.2)	(38.3)	(39.4)	(109.2)	(146.9)	(97)			
U option	6731 (265)	941	945	973	1001	2773	3731	2464			
		(37)	(37.2)	(38.3)	(39.4)	(109.2)	(146.9)	(97)			
V	6985 (275)	947	951	979	1011	2778	3735	2464			
		(37.3)	(37.4)	(38.5)	(39.8)	(109.4)	(147)	(97)			
W	7137 (281)	947	951	979	1010	2777	3735	2464			
		(37.3)	(37.4)	(38.5)	(40)	(109.3)	(147)	(97)			
16000lbs	315/80R22.5	22.5x9.00	K	4623 (182)	939	947	978	1017	2782	3740	2464
					(37)	(37.3)	(38.5)	(40)	(109.5)	(147.2)	(97)
			L	4928 (194)	940	947	978	1015	2781	3739	2464
					(37)	(37.3)	(38.5)	(40)	(109.5)	(147.2)	(97)
N	5436 (214)	943	950	981	1016	2780	3738	2464			
		(37.1)	(37.4)	(38.6)	(40)	(109.4)	(147.2)	(97)			
R	5918 (233)	944	950	981	1014	2780	3738	2464			
		(37.2)	(37.4)	(38.6)	(39.9)	(109.4)	(147.2)	(97)			

[NOTE]

- FRAME HEIGHTS ARE BASED ON SMALLEST FRAME SECTION AVAILABLE FOR A GIVEN WHEELBASE AND GAWR.
- HEIGHTS BASED ON 11R22.5 REAR TIRES UNLESS SHOWN OTHERWISE.
- ADDITIONAL DIMENSIONS CAN BE PROVIDED WITH REQUEST TO SALES REP.

• **MODEL : NMC2(XL8) < Day Cab >**
REAR AIR 46K SUSPENSION

DIMENSION OF HEIGHT FROM GROUND

Unit : mm (in.)

FR AXLE	TIRE	WHEEL	WHEELBASE		GROUND HEIGHT FRAME UPPER SURFACE				H CAB	H Vert Stack	ROH
					HfO	Hf	Hr	HrO			
14600lbs	11R22.5	22.5X8.25	K	4623 (182)	895 (35.2)	914 (36)	1000 (39.4)	1064 (41.9)	2767 (108.9)	3728 (146.8)	2464 (97)
			L	4928 (194)	896 (35.3)	914 (36)	1000 (39.4)	1061 (41.8)	2766 (108.9)	3726 (146.7)	2464 (97)
			N	5436 (214)	897 (35.3)	914 (36)	1000 (39.4)	1056 (41.6)	2763 (108.8)	3723 (146.6)	2464 (97)
			R	5918 (233)	899 (35.4)	914 (36)	1000 (39.4)	1053 (41.5)	2761 (108.7)	3721 (146.5)	2464 (97)
			U	6629 (261)	902 (35.5)	921 (36.3)	1007 (39.6)	1059 (41.7)	2761 (108.7)	3720 (146.5)	2464 (97)
			U option	6731 (265)	908 (35.7)	921 (36.3)	1007 (39.6)	1058 (41.7)	2760 (108.7)	3720 (146.5)	2464 (97)
	FR 295/75R22.5 RR 295/75R22.5	22.5X8.25	K	4623 (182)	883 (34.8)	902 (35.5)	987 (38.9)	1049 (41.3)	2755 (108.5)	3715 (146.3)	2464 (97)
			L	4928 (194)	884 (34.8)	902 (35.5)	987 (38.9)	1046 (41.2)	2753 (108.4)	3713 (146.2)	2464 (97)
			N	5436 (214)	886 (34.9)	902 (35.5)	987 (38.9)	1042 (41.)	2751 (108.3)	3710 (146.1)	2464 (97)
			R	5918 (233)	887 (34.9)	902 (35.5)	987 (38.9)	1038 (40.9)	2749 (108.2)	3708 (146)	2464 (97)
			U	6629 (261)	896 (35.3)	909 (35.8)	994 (39.1)	1045 (41.1)	2748 (108.2)	3708 (146)	2464 (97)
			U option	6731 (265)	896 (35.3)	909 (35.8)	994 (39.1)	1044 (41.1)	2748 (108.2)	3707 (145.9)	2464 (97)
	12R22.5	22.5X9.00	K	4623 (182)	919 (36.2)	934 (36.8)	1000 (39.4)	1053 (41.5)	2781 (109.5)	3740 (147.2)	2464 (97)
			L	4928 (194)	920 (36.2)	934 (36.8)	1000 (39.4)	1051 (41.4)	2779 (109.4)	3739 (147.2)	2464 (97)
			N	5436 (214)	921 (36.3)	934 (36.8)	1000 (39.4)	1047 (41.2)	2778 (109.4)	3737 (147.1)	2464 (97)
			R	5918 (233)	922 (36.3)	934 (36.8)	1000 (39.4)	1044 (41.1)	2776 (109.3)	3735 (147)	2464 (97)
			U	6629 (261)	931 (36.7)	941 (37)	1007 (39.6)	1052 (41.4)	2776 (109.3)	3735 (147)	2464 (97)
			U option	6731 (265)	931 (36.7)	941 (37)	1007 (39.6)	1051 (41.4)	2776 (109.3)	3735 (147)	2464 (97)
	FR 315/80R22.5 RR 295/75R22.5	FR 22.5X9.00 RR 22.5x8.25	K	4623 (182)	930 (36.6)	940 (37)	987 (38.9)	1029 (40.5)	2781 (109.5)	3739 (147.2)	2464 (97)
			L	4928 (194)	930 (36.6)	940 (37)	987 (38.9)	1027 (40.4)	2780 (109.4)	3738 (147.2)	2464 (97)
			N	5436 (214)	931 (36.7)	940 (37)	987 (38.9)	1024 (40.3)	2778 (109.4)	3737 (147.1)	2464 (97)
			R	5918 (233)	932 (36.7)	940 (37)	987 (38.9)	1022 (40.2)	2777 (109.3)	3735 (147)	2464 (97)
			U	6629 (261)	940 (37)	947 (37.3)	994 (39.1)	1030 (40.6)	2778 (109.4)	3736 (147.1)	2464 (97)
			U option	6731 (265)	940 (37)	947 (37.3)	994 (39.1)	1030 (40.6)	2778 (109.4)	3736 (147.1)	2464 (97)
16000lbs	315/80R22.5	22.5x9.00	K	4623 (182)	935 (36.8)	947 (37.3)	1000 (39.4)	1048 (41.3)	2789 (109.8)	3748 (147.6)	2464 (97)
			L	4928 (194)	935 (36.8)	947 (37.3)	1000 (39.4)	1046 (41.2)	2788 (109.8)	3747 (147.5)	2464 (97)
			N	5436 (214)	939 (37)	950 (37.4)	1003 (39.5)	1046 (41.2)	2787 (109.7)	3745 (147.4)	2464 (97)
			R	5918 (233)	942 (37.1)	952 (37.5)	1005 (39.6)	1049 (41.3)	2785 (109.6)	3744 (147.4)	2464 (97)

[NOTE]

• FRAME HEIGHTS ARE BASED ON SMALLEST FRAME SECTION AVAILABLE FOR A GIVEN WHEELBASE AND GAWR.

• HEIGHTS BASED ON 11R22.5 REAR TIRES UNLESS SHOWN OTHERWISE.

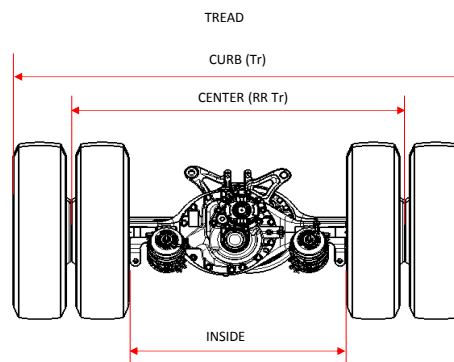
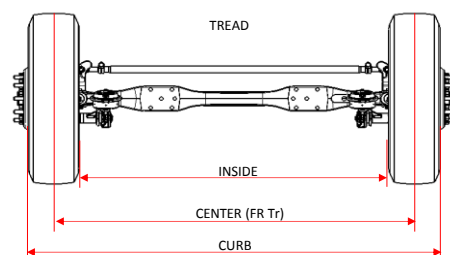
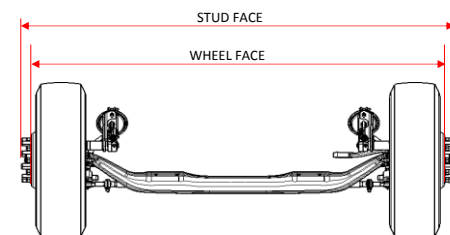
• ADDITIONAL DIMENSIONS CAN BE PROVIDED WITH REQUEST TO SALES REP.

• **MODEL : NMC2(XL8) < Day Cab >**
REAR AIR SUSPENSION

Unit : mm (in.)

DIMENSION OF WIDTH : FRONT

DIMENSION OF WIDTH - FRONT									
MODEL	FR AXLE	TIRE	WHEEL	DISC	BRAKES	FR Tr	FR CURB	FR WHL	FR STUD
NMC2 (XL8)	14600LBS	11R22.5	22.5X8.25	ALUM	DRUM / DISC	2103 (82.8)	2382 (93.8)	2439 (96)	2532 (99.7)
				STEEL		2081 (81.9)	2360 (92.9)	2416 (95.1)	
		295/75R22.5		ALUM		2103 (82.8)	2394 (94.3)	2439 (96)	
				STEEL		2081 (81.9)	2372 (93.4)	2416 (95.1)	
		12R22.5	22.5X9.00	ALUM		2088 (82.2)	2388 (94)	2444 (96.2)	
				STEEL		2070 (81.5)	2370 (93.3)	2426 (95.5)	
		315/80R22.5		ALUM		2088 (82.2)	2400 (94.5)	2444 (96.2)	
				STEEL		2070 (81.5)	2382 (93.8)	2426 (95.5)	
	16000LBS	315/80R22.5	22.5X9.00	STEEL	DRUM	2070 (81.5)	2382 (93.8)	2362 (93)	2472 (97.3)
					DISC	2084 (82)	2396 (94.3)	2377 (93.6)	2481 (97.7)



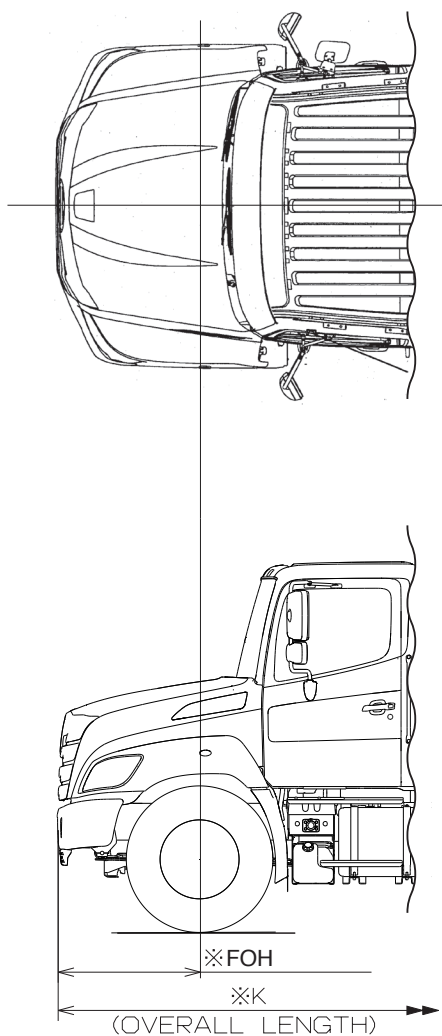
DIMENSION OF WIDTH : REAR

DIMENSION OF WIDTH : REAR							
MODEL	RR AXLE	TIRE	WHEEL	DISC	BRAKES	RR Tr	Tr
NMC2 (XL8)	40000LBS / 46000LBS	11R22.5	22.5X8.25	ALUM	DRUM	1865 (73.4)	2480 (97.6)
				STEEL		1843 (72.6)	2457 (96.7)
		295/75R22.5		ALUM		1865 (73.4)	2491 (98.1)
				STEEL		1843 (72.6)	2469 (97.2)
		12R22.5	22.5X9.00	ALUM		1871 (73.7)	2526 (99.4)
				STEEL		1853 (73)	2508 (98.7)
		315/80R22.5		ALUM		1871 (73.7)	2538 (99.9)
				STEEL		1853 (73)	2520 (99.2)
		455/55R22.5	22.5X14.00	STEEL		1853 (73)	2305 (90.7)
		11R22.5	22.5X8.25	ALUM	DISC	1864 (73.4)	2478 (97.6)
				STEEL		1841 (72.5)	2456 (96.7)
		295/75R22.5		ALUM		1864 (73.4)	2489 (98)
				STEEL		1841 (72.5)	2467 (97.1)
		12R22.5	22.5X9.00	ALUM		1869 (73.6)	2525 (99.4)
				STEEL		1851 (72.9)	2507 (98.7)
		315/80R22.5		ALUM		1869 (73.6)	2537 (99.9)
				STEEL		1851 (72.9)	2519 (99.2)
		455/55R22.5	22.5X14.00	STEEL		1851 (72.9)	2303 (90.7)

NOTE: Additional dimensions can be provided with request to Sales Rep.

• MODEL : NMC2(XL8) < Day Cab >
REAR AIR SUSPENSION

OPTIONAL BUMPER



DIMENSION OF CHASSIS

Unit : mm (in.)

Wheelbase		FOH	K
K	4623 (182)	1181 (46.5)	8267 (325.5)
L	4928 (194)	1181 (46.5)	8572 (337.5)
N	5436 (214)	1181 (46.5)	9080 (357.5)
R	5918 (233)	1181 (46.5)	9563 (376.5)
U	6629 (261)	1181 (46.5)	10274 (404.5)
U option	6731 (265)	1181 (46.5)	10376 (408.5)
V	6985 (275)	1181 (46.5)	10630 (418.5)
W	7137 (281)	1181 (46.5)	10782 (424.5)

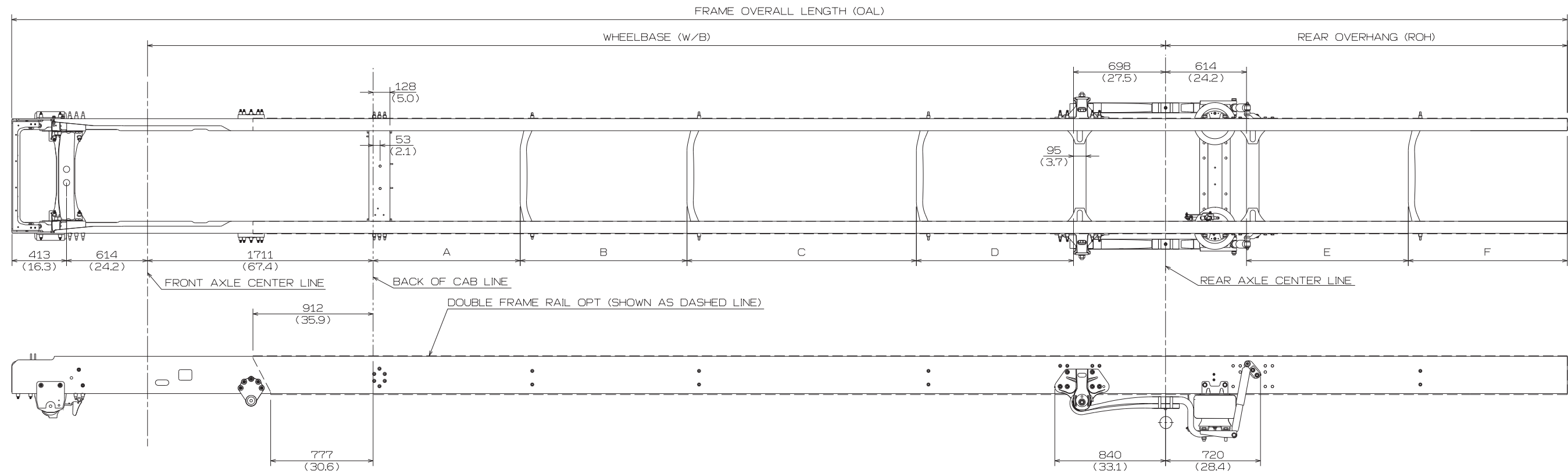
NOTE:1.FIGURES MARKED "※" ARE DIMENSIONS MEASURED
IN PARALLEL WITH THE SURFACE OF THE GROUND.
2.DIMENSIONS IN () ARE INCHES.

4. CHASSIS FRAME DRAWINGS

Unit : mm (in.)

MODEL : NHC2(XL7&XL8) < Day Cab >
REAR AIR SUSPENSION

1) DETAIL OF CHASSIS FRAME



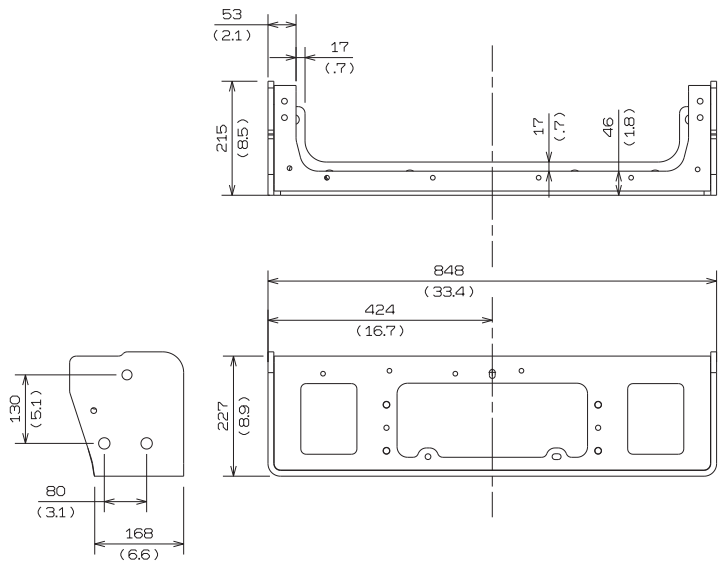
DIMENSION OF CHASSIS

Unit : mm (in.)

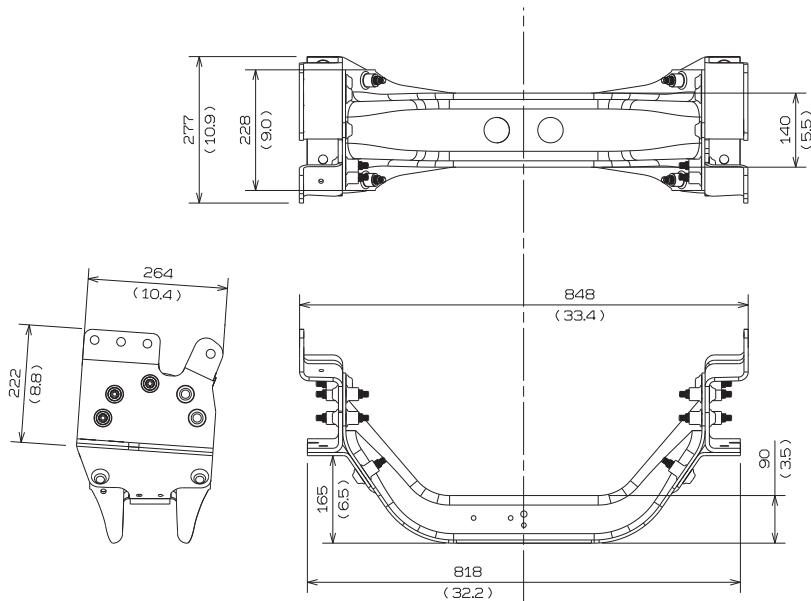
Wheelbase		A	B	C	D	E	F	ROH	OAL
M	5207	711	930		1157	1346 (53.)	623 (24.5)	2007 (79)	8244 (324.6)
	(205)	(28)	(36.6)		(45.6)	1181 (46.5)		2464 (97)	8701 (342.6)
P	5512	966	780		1357	1346 (53.)	623 (24.5)	2007 (79)	8548 (336.5)
	(217)	(38)	(30.7)		(53.4)	1181 (46.5)		2464 (97)	9006 (354.6)
R	5969	1116	1110		1334	1346 (53.)	623 (24.5)	2007 (79)	9006 (354.6)
	(235)	(43.9)	(43.7)		(52.5)	1181 (46.5)		2464 (97)	9463 (372.6)
T	6426	566	1500	770	1181	1346 (53.)	623 (24.5)	2007 (79)	9463 (372.6)
	(253)	(22.3)	(59.1)	(30.3)	(46.5)	1181 (46.5)		2464 (97)	9920 (390.6)
V	6883	566	1560	1040	1308	1346 (53.)	623 (24.5)	2007 (79)	9920 (390.6)
	(271)	(22.3)	(61.4)	(40.9)	(51.5)	1181 (46.5)		2464 (97)	10377 (408.5)
X	7341	711	1740	1145	1335	1346 (53.)	623 (24.5)	2007 (79)	10377 (408.5)
	(289)	(28)	(68.5)	(45.1)	(52.6)	1181 (46.5)		2464 (97)	10834 (426.5)

2) DETAIL OF CROSSMEMBER

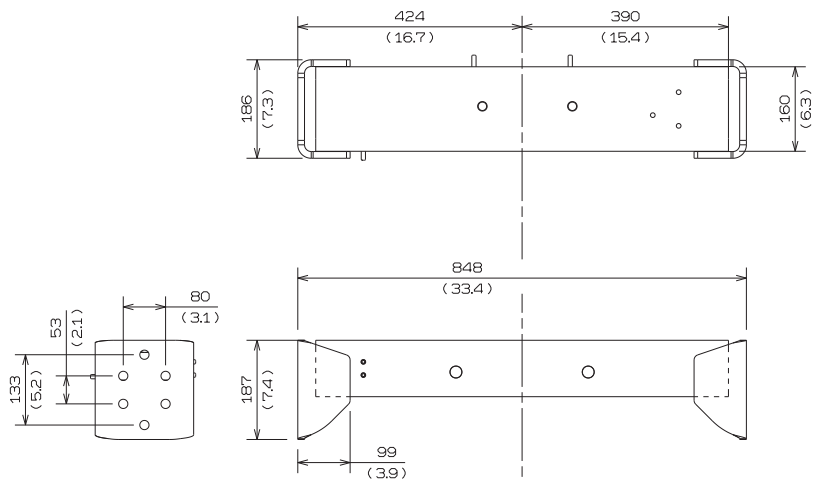
Unit : mm (in.)



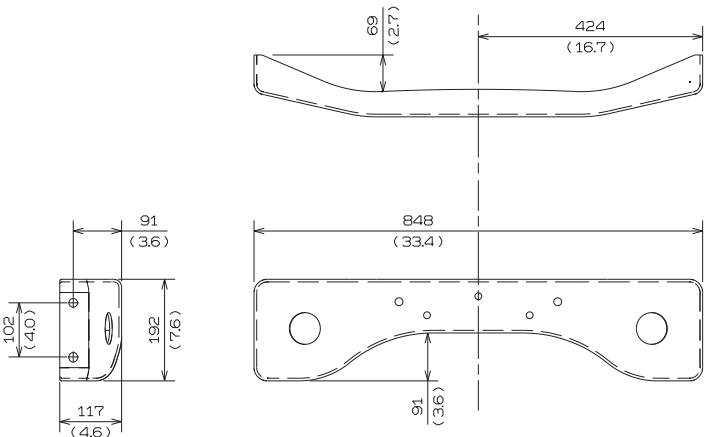
NO.1 CROSSMEMBER



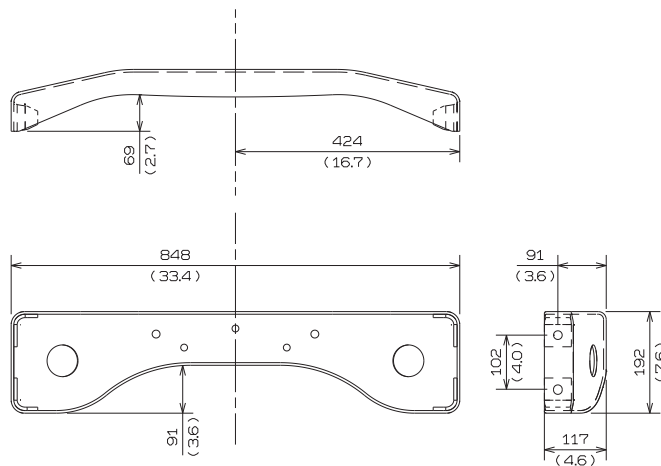
NO.2 CROSSMEMBER



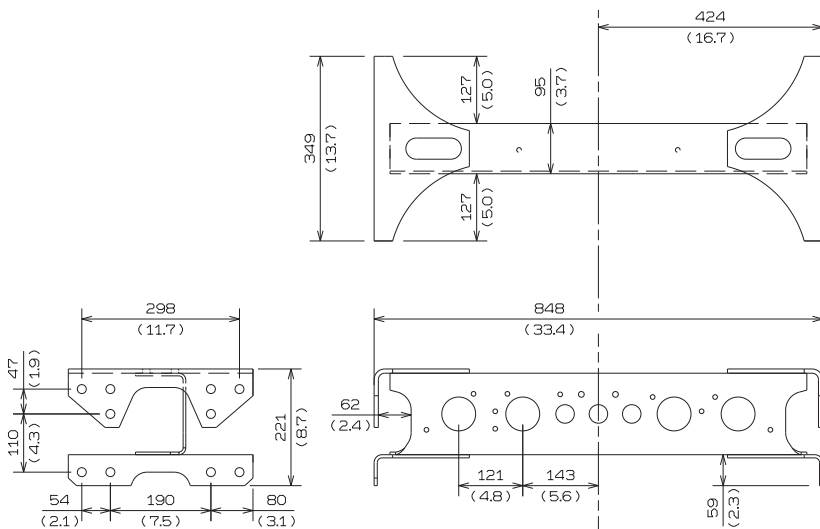
NO.3 CROSSMEMBER



DOGBONE STYLE CROSSMEMBER
(NON-REINFORCED)



DOGBONE STYLE CROSSMEMBER
(REINFORCED)

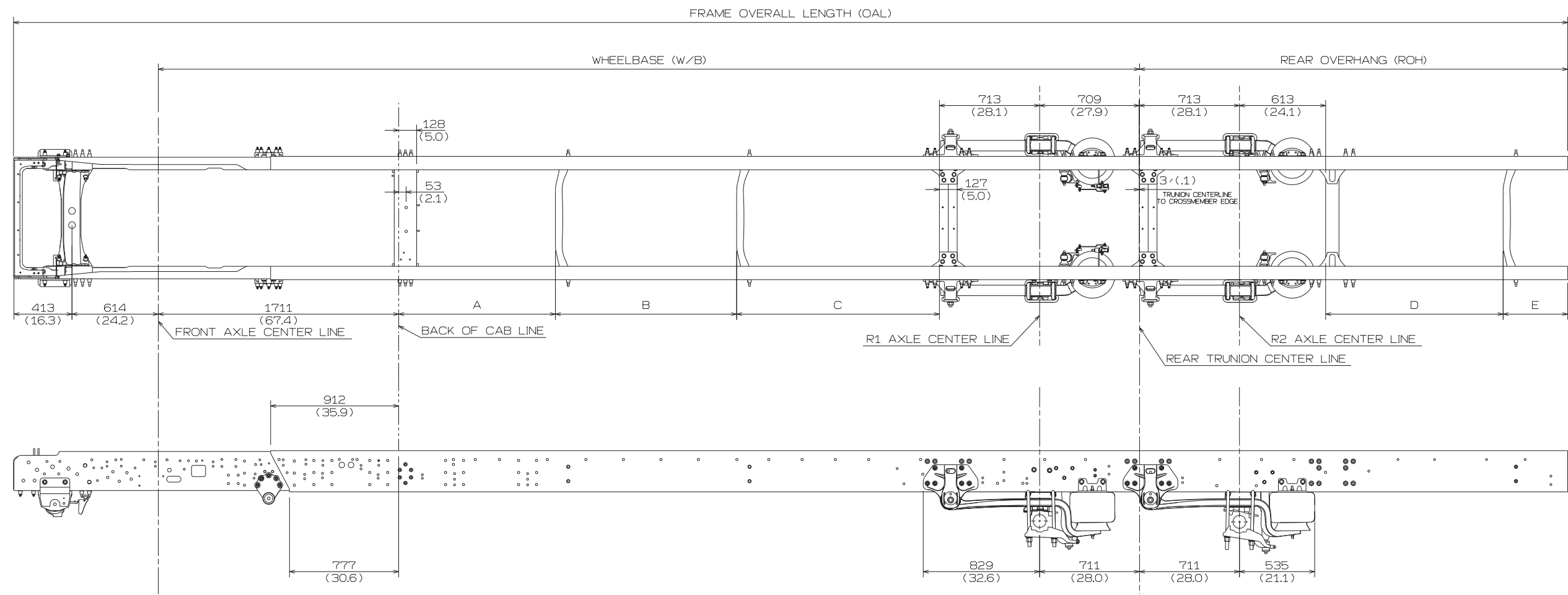


WELDED STYLE CROSSMEMBER

MODEL : NMC2(XL8) < Day Cab >
REAR AIR SUSPENSION

Unit : mm (in.)

1) DETAIL OF CHASSIS FRAME



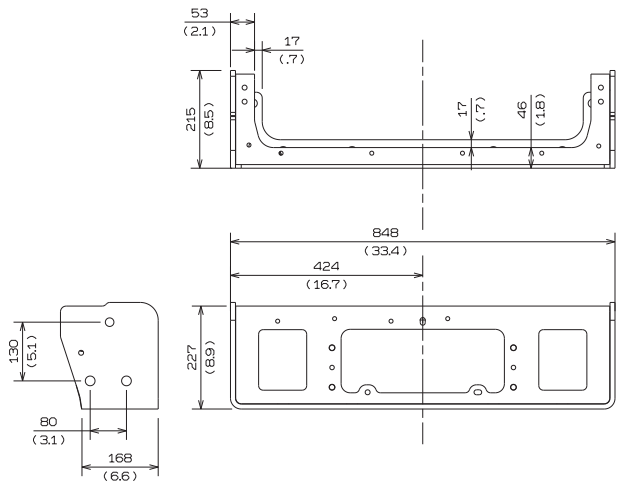
DIMENSION OF CHASSIS

Unit : mm (in.)

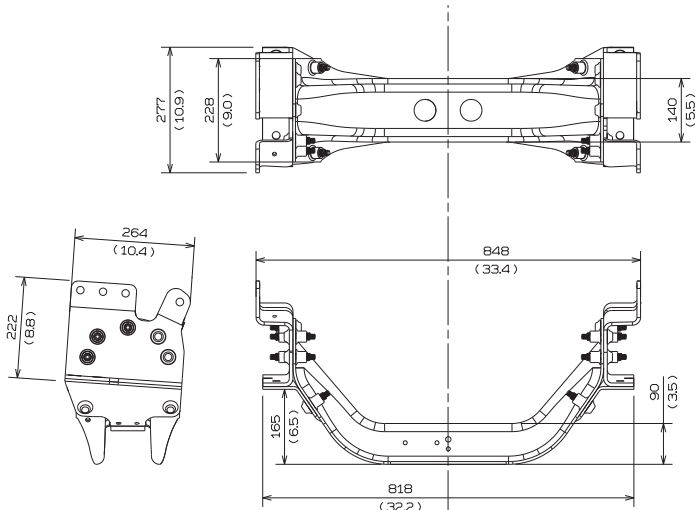
Wheelbase		A	B	C	D	E	ROH	OAL
K	4623 (182)	566 (22.3)	922 (36.3)		632 (24.9)	460 (18.1)	2464 (97)	8117 (320)
L	4928 (194)	566 (22.3)	1227 (48.3)		632 (24.9)	460 (18.1)	2464 (97)	8421 (332)
N	5436 (214)	966 (38)	810 (31.9)	525 (20.7)	632 (24.9)	460 (18.1)	2464 (97)	8929 (352)
R	5918 (233)	711 (28)	840 (33.1)	1232 (48.5)	632 (24.9)	460 (18.1)	2464 (97)	9412 (371)
U	6629 (261)	1116 (43.9)	1075 (42.3)	1304 (51.3)	632 (24.9)	460 (18.1)	2464 (97)	10123 (399)
U option	6731 (265)	1116 (43.9)	1075 (42.3)	1405 (55.3)	632 (24.9)	460 (18.1)	2464 (97)	10225 (403)
V	6985 (275)	1116 (43.9)	1290 (50.8)	1443 (56.8)	632 (24.9)	460 (18.1)	2464 (97)	10479 (413)
W	7137 (281)	1116 (43.9)	1440 (56.7)	1447 (57)	632 (24.9)	460 (18.1)	2464 (97)	10631 (419)

2) DETAIL OF CROSSMEMBER

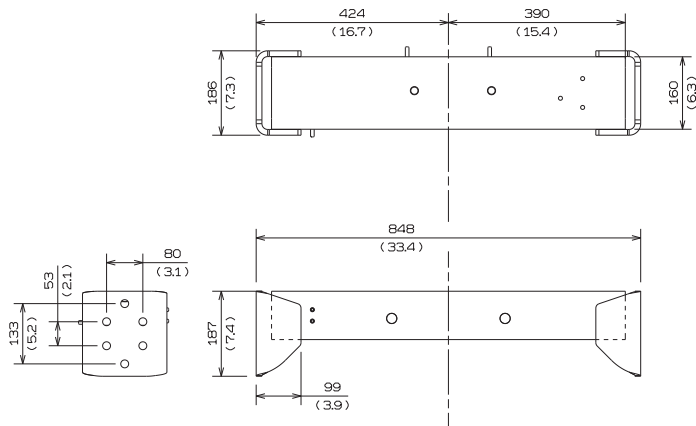
Unit : mm (in.)



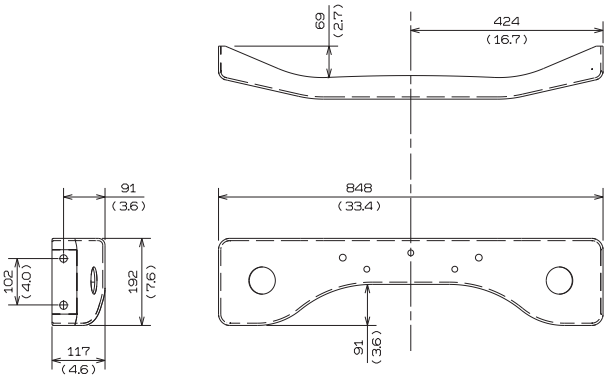
NO.1 CROSSMEMBER



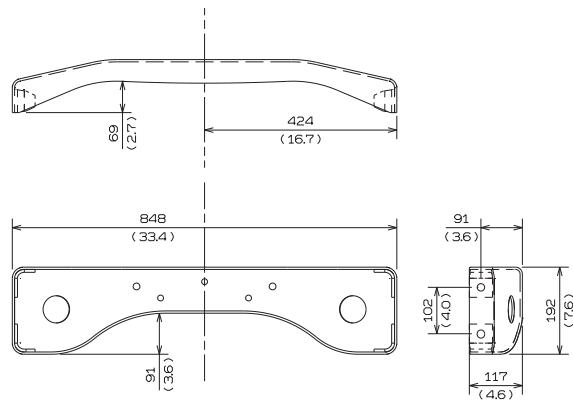
NO.2 CROSSMEMBER



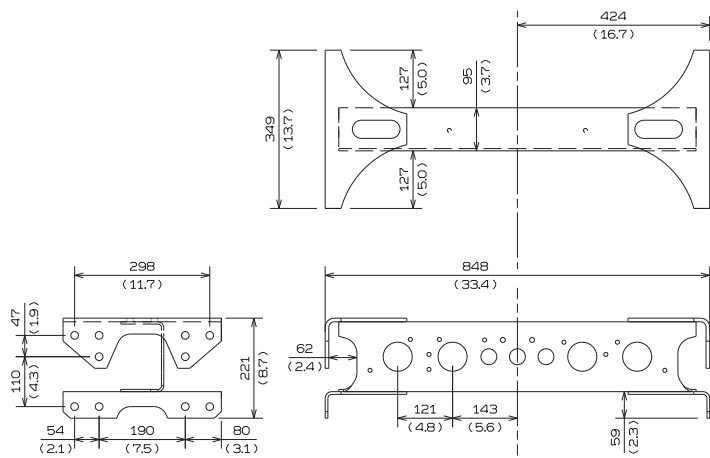
NO.3 CROSSMEMBER



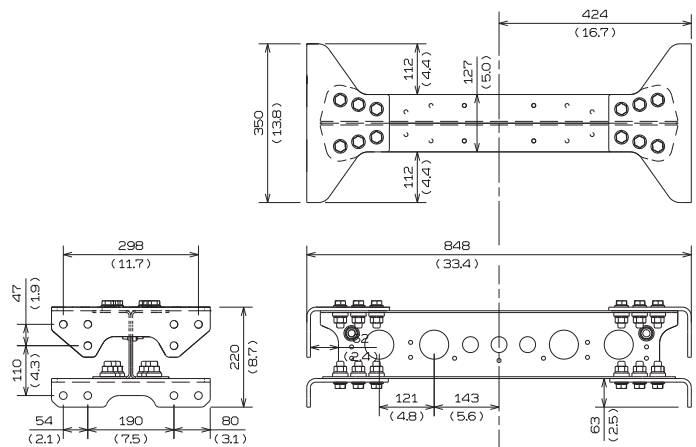
DOGBONE STYLE CROSSMEMBER
(NON-REINFORCED)



DOGBONE STYLE CROSSMEMBER
(REINFORCED)



WELDED STYLE CROSSMEMBER

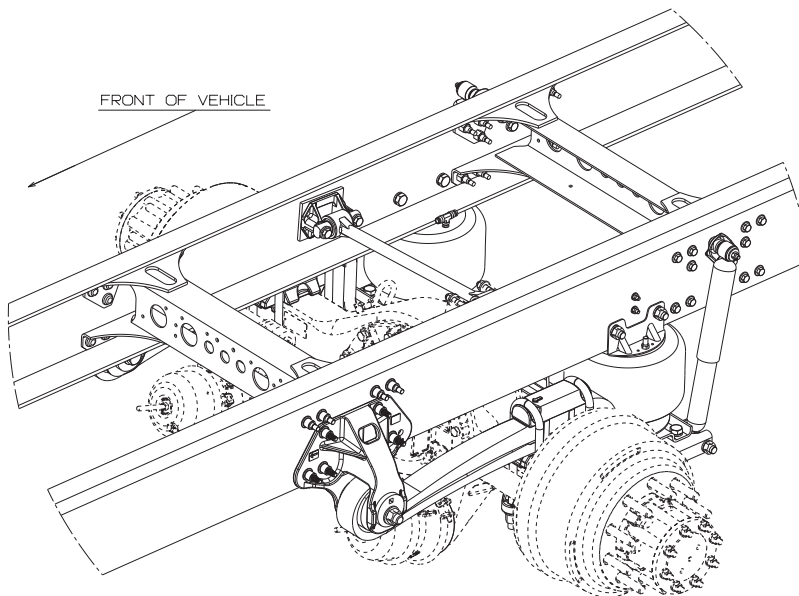


BOLTED STYLE CROSSMEMBER

5. REFERENCE FIGURE FOR SUSPENSION

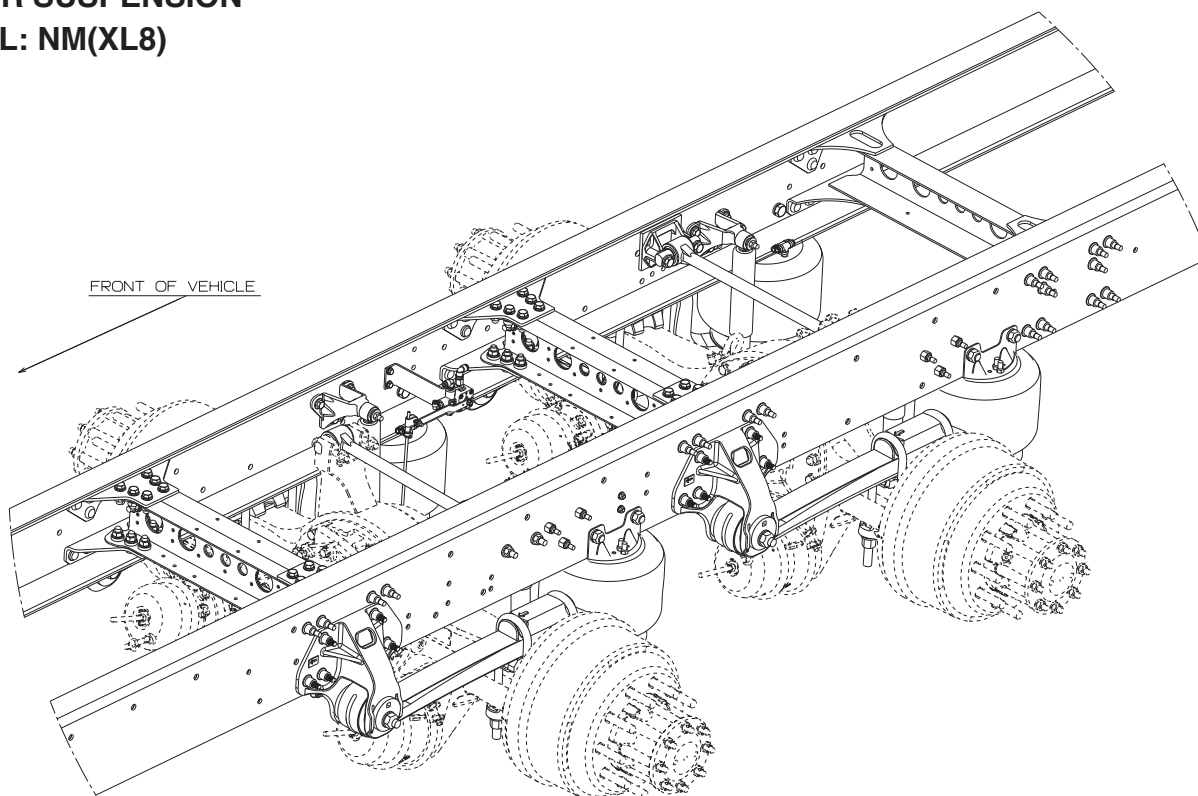
AIR SUSPENSION

MODEL: NH(XL7&XL8)



40K AIR SUSPENSION

MODEL: NM(XL8)



**46K AIR SUSPENSION
MODEL: NM(XL8)**

